



COUNCIL FOR EARTH LEADERSHIP & SUSTAINABILITY

**AN INSTITUTE FOR DEVELOPING EARTH LEADERS FOR A
BETTER TOMORROW**

WHO WE ARE

The Council for Earth Leadership and Sustainability (CELS), aka The Earth Center, is a **national-level institute** on a mission to revere and preserve the Earth. It serves the capacity-building needs of the **Council for Green Revolution (CGR)**.

VISION

To become a center of excellence for creating leaders with earth consciousness for sustainable development

OBJECTIVES

CELS seeks to have a positive impact on the environment, climate change, & holistic sustainable development through:

Training & Capacity Building: to come up with environmentally relevant enterprise solutions & promote sustainable livelihoods.

Research & Policy Advocacy: conduct research studies & impact evaluations on the projects of donors & government to drive policy formulation based on knowledge & research.

Change Agents: Nurture Earth Leaders from all walks of life, who will find solutions to local and global challenges.

Our programs seek to create **awareness and empower** people by developing transformative Earth Mission Leaders who can carry forward in that direction. We build capacities and foster partnerships to improve the **quality of life on Earth**.

MISSION

CELS seeks to make its vision a reality through



Capacity Building



Creating awareness & sensitization through seminars & conferences



Enhancing knowledge & skills through workshops



Networking, mobilizing, & organizing for institution building



Communications & Research



FACILITIES

CELS is located at **Anmaspally village of Ranga Reddy District, Telangana**, in a semi-arid zone adjacent to **Thipareddy Palli Reserve Forest**, with beautiful peninsular rocks interspersed with **water bodies and bestowed** with rich biodiversity. Infrastructure facilities created using ecological designs are:

- A green belt with biodiversity
- Energy-efficient & low-cost building technologies
- Renewable energy solutions
- A library, visitors center & natural history museum
- Earth Leaders Hall, accommodating 50 participants
- Office & administrative facility
- An amphitheater: can host 1000 people
- A dais and ground: ideal for 2000+ participants
- A facility for lectures & meetings: 30 to 50 people
- Walden Lake for ecological learning & contemplation
- A permaculture garden of various local plant species
- Medical Garden and Organic farm

AGENDA



Sustainable Development Goals



Biodiversity & Human Responsibility



Climate Change & Disaster Mgmt.



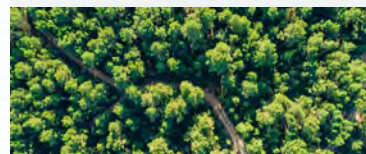
Decarbonisation



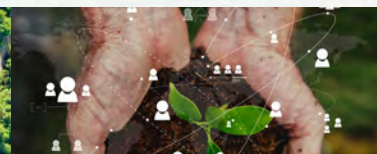
Environmental Economics



Sustainable Cities



Greening & Eco-Sensitization



Geo-Spirit Nature Connect Activities





GOVERNANCE

The institution is managed by:

THE ADVISORY BOARD: Consists of eminent personalities from reputed institutions and organizations, who make suggestions to CELS and guide their implementation.

EXECUTIVE COMMITTEE: It advises CELS and defines the annual action plans and budgetary provisions.

ACADEMIC COMMITTEE: Advises on programs, curriculum, courses, and MoUs with academic institutions.

DEANS AND FACULTY: Deliver the programs, courses, research, and do capacity building.

TECHNICAL SUPPORT GROUP: The CELS is supported by a technical support group (TSG) for each of the focal areas of interventions, which provides inputs to trigger positive action. TSG will play an active part in prioritizing action areas, studying best practices, designing programs, developing implementation protocols, and suggesting improvements.

STAFF AND ESTABLISHMENT: CELS is managed by the Director, whose appointment is proposed by the President of CGR. The Director, Dean, and faculty form the core of delivering and realizing the objectives of CELS.



CONTACT US

ADDRESS

CELS, The Earth Center, Anmaspally village, Kadthal Mandal, Rangareddy District, Telangana – 509358, India

MOBILE
+91 7396660972

EMAIL
info@celsinstitute.org

www.celsinstitute.org