



 **CARE BLEND**TM

EXCEPTIONAL CARE CLOSE TO YOU

ABOUT US

DELIVERING INTEGRATED FACILITY MANAGEMENT SERVICES WITH EXCEPTIONAL QUALITY

CareBlend Facility Management Pvt. Ltd. is a flourishing **facility management service provider** in India. We deal in a wide range of services including corporate services, housekeeping services, building maintenance services, security services, and many more. Our **sound experience** has garnered us a **strong position** in the market. Headquartered in Crossings Republik, Ghaziabad, we are a team of **hardworking professionals** providing **unmatched quality services** to our customers.

Our customers are our priority

Our **wide spectrum of customers** includes companies from varied sectors including Real estate, MNCs, Corporate offices, Industries, Education, Government, Healthcare, Media Houses, IT Companies, Hospitality & Commercial complexes.



MISSION

To provide sustainable service to all & become the paramount service provider known for unprecedented quality.



VISION

To become a globally recognized service provider by delivering world-class services, high performance, & great value under one roof.

CareBlend Facility Management Pvt. Ltd. has a **prominent presence in Delhi** NCR, Noida, Ghaziabad, and other parts of India. Our customers are our priority, and we strive to **create a better experience** by enhancing service quality with the deployment of **trained manpower and latest equipment**.

The team at CareBlend is **highly qualified** and **holds expertise** in their respective fields. Led by highly skilled & accomplished directors, **Mr. Indrakant Jha, Mr. Veer Upendra, and Ms. Sudha Sinha**, we at CareBlend have adopted the **integrated facility management approach** to provide clients with better services at **reasonable prices**.

better services at rational prices



DELIVERING EXCEPTIONAL QUALITY INTEGRATED SERVICES BUILT ON EXCELLENCE, EXPERTISE, INTEGRITY, & SAFETY STANDARDS



OUR SERVICES

ENDOWING OUR CUSTOMERS WITH A WIDE RANGE OF SERVICES

CareBlend holds **expertise** in diverse **soft services**, **pest control services**, **landscaping**, and **residential management services**. We design **customized services** according to the needs and preferences of our clients to ensure a **flexible strategy** that meets their **goals and purpose**.



SOFT SERVICES

- > Housekeeping, Cleaning & Janitorial Services
- > Waste Management, Horticulture
- > Reception Service, Reprographic Services
- > Concierge Services, Helpdesk Services
- > Store Management, Statutory Compliance
- > Façade Cleaning
- > Club House & Swimming Pool Management
- > Parking Arrangement, Space Planning
- > Liaison with internal & external customers



PEST CONTROL

- > Residential Pest Control, Commercial Pest Control, Institutional Pest Control



LANDSCAPING

- > Mowing, edging and fertilizing lawns
- > Weeding and mulching landscape beds
- > Trimming small trees, hedges, and shrubs
- > Removing unwanted, dead, or damaged trees
- > Planting shrubs, flowers, and trees
- > Watering gardens, lawns, and landscapes
- > Monitoring and maintaining plant health



RESIDENTIAL MANAGEMENT

- > Apartment ERP and gatekeeper system
- > Community management
- > Staff attendance tracking through biometric readers
- > Automated scheduled reporting
- > Visitor, staff, and parcel management
- > Water monitors for water tanker regulation
- > RFID-based vehicle movement tracking
- > Move-in/out management
- > Complaint auto-escalation

ONE-STOP SOLUTION

WE ENDEAVOUR TO MAKE OUR CUSTOMERS' LIVES BETTER

Our range of services further includes **multiple hard services**, **IT services**, **security services** & **kids care facilities**. Our experienced team providing a varied range of facility management services **under one roof**.



HARD SERVICES

- > HT & LT Installations, HVAC Systems, UPS, Captive Power
- > Fire Detection, Lifts & Elevators, STP/WTP
- > Plumbing & Water Management
- > Electrical Systems, Building Automation
- > Power supply system including DG sets
- > CAM computation, billing & collection
- > AMC & Preventive Maintenance
- > Energy Management, Building Repairs & Maintenance
- > Sinking Fund Management
- > Technical Advice and Assistance



IT SERVICES

- > Sale of IT Products, Security, & Surveillance System
- > Annual Maintenance contracts
- > Access Control System, Fire Alarm System
- > Computer Hardware & Software
- > Networking Solutions Wired/ Wireless
- > Project Management (Design & Engineering)
- > Installation & Commissioning
- > Integration of Security System with IT
- > After Sales Support, Workflow solution



KIDS CARE FACILITY

CareBlend has further spread its wings into providing kids care facilities. We provide creche facilities and ensure a safe and friendly environment for children. Our day-care structure creates a responsive environment for infants, toddlers, pre-schoolers, and kindergarteners.



SECURITY SERVICES

- > Physical Training /Arms Training
- > Residential/ Commercial threat assessment
- > Human relations techniques (panic, & distress)
- > Procedure for search, frisking of men and vehicles
- > Firefighting and first aids
- > Management of reports and records
- > Reporting incidents, investigation, and FIR
- > Threats against personnel & assets of the organization
- > Emergency management and quick reaction team
- > Socio-Political and ethnic groups in the vicinity
- > Anti-organizational elements/ group
- > Single point of contact on call
- > Regular checking of security personnel
- > Surprise checks by operation manager

LEADERSHIP

EXPERTISE IN RUNNING AND EXECUTING FACILITY MANAGEMENT OPERATIONS

CareBlend has been able to **achieve success** under the **dynamic leadership** of its directors. Having expertise in running and executing facility management operations, our directors **make a unique blend of knowledge and experience.**



INDRAKANT JHA

He is the **co-founder & director** of CareBlend Facility Management Pvt. Ltd. Being in the industry for **more than 15 years**, he has **strong business acumen**. Specializing in the formulation of **effective business strategies** & handling facility management operations, he has worked with various **market leaders in the real estate industry.**



SUDHA SINHA

Being a **highly qualified** and experienced professional, she specializes in **employee management**. Her **ambitious personality** has ensured development of a **collaborative work environment** that has resulted in the execution of the **best quality services.**



VEER UPENDRA

Skilled in **technical aspects** of the industry, he has an **extensive experience of over 20 years** in general administration & facility management. His ability to amalgamate creativity with technical aspects has resulted in uncovering creative **technological solutions** for our customers. He had closely worked with some of the renowned companies like **CIPL, ESSEL group, JLL** etc. at a senior level.



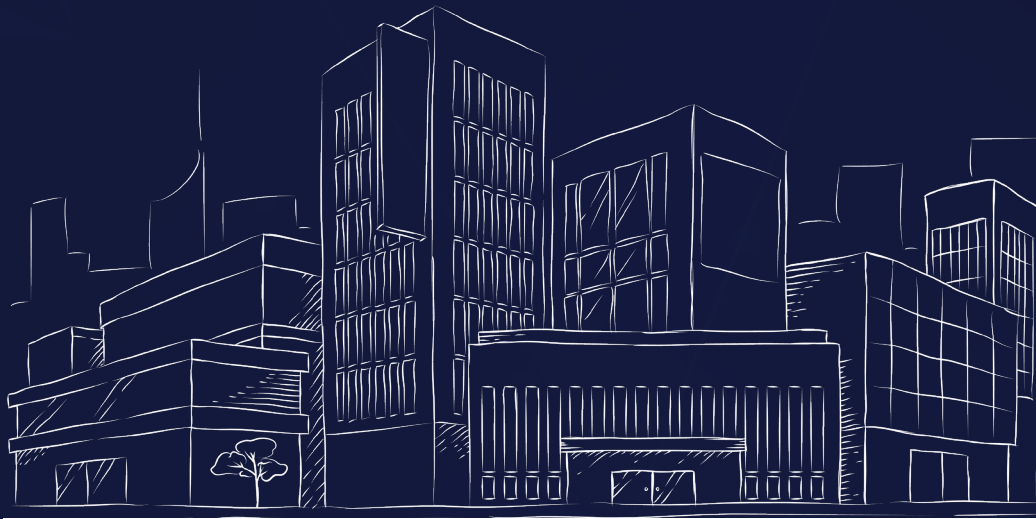
KAMESHWAR PRASAD PANDEY

Retd. Electrical Engineer of UPPCL with **over 10 years** of experience in Real Estate sector and has efficiently managed all **electricals work from 33KV level to LT level of 360-acre township.**

PRESTIGIOUS NAMES

OUR MAJOR CLIENTS





 **ADDRESS**

CareBlend Facility Management Private Limited
CIN No.: U93090UP2022PTC158117

Shop No-102, First Floor, Newtech La-Gracia Mall, Plot No.: C-03, Crossing Republik Township,
Ghaziabad, UP- 201016

 **EMAIL**

info@careblendgroup.com

 **WEBSITE**

careblendgroup.com

 **MOBILE**

+91-9910936667, 0120-5102822