



TTA PANEL



L.T. PANEL

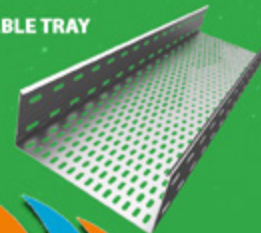


H.T. PANEL

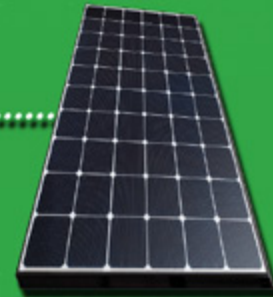


BUSDUCT

CABLE TRAY



UPS



SOLAR PANEL



INTEGRATED  
WATER HEATER



PACKAGE SUBSTATION



TRANSFORMER

[www.lspowercontrol.com](http://www.lspowercontrol.com)



Our manufacturing unit in the industrial hub of Haryana features our highly efficient team of qualified workforce who put continuous efforts to improve and enhance our product quality and its safety and thriving to make us the premium suppliers of electrical goods. We manufacture in-house to ensure complete quality adherence and deliver products that are both, effective and efficient. From selecting raw materials to manufacturing, packaging and supplying, each step of product formation involves intensive quality checks and evaluation and is at par with the international standards.

L.S. Power Control Pvt. Ltd. has a modernistic infrastructure set up, that assists in the manufacturing and supply of a quality range of products. Our infrastructure is well-equipped with the latest machines. We aim to provide complete support systems to fulfill the clients needs in a flawless and efficient manner. The company has a huge workspace of over 1.5 Lakh sq. ft. area and has a massive assembly hall, which leads high-end production. Our infrastructural facilities include fabrication shop, paint shop, assembly section for manufacturing any type of structure as per client's specific requirements.

## INFRASTRUCTURE



A large blue circle containing the word 'VISION' in white capital letters. It is part of a central graphic with three overlapping circles: 'VISION' (blue), 'MISSION' (yellow), and 'VALUES' (light blue). The graphic is surrounded by various icons: a speech bubble, a globe, a house, a lightbulb, a bar chart, and an envelope, all in small circular frames. The background features a large, light blue chevron shape pointing to the right.

VISION

A large yellow circle containing the word 'MISSION' in white capital letters. It is part of a central graphic with three overlapping circles: 'VISION' (blue), 'MISSION' (yellow), and 'VALUES' (light blue). The graphic is surrounded by various icons: a speech bubble, a globe, a house, a lightbulb, a bar chart, and an envelope, all in small circular frames. The background features a large, light blue chevron shape pointing to the right.

MISSION

A large light blue circle containing the word 'VALUES' in white capital letters. It is part of a central graphic with three overlapping circles: 'VISION' (blue), 'MISSION' (yellow), and 'VALUES' (light blue). The graphic is surrounded by various icons: a speech bubble, a globe, a house, a lightbulb, a bar chart, and an envelope, all in small circular frames. The background features a large, light blue chevron shape pointing to the right.

VALUES

## OUR VISION

We at L.S. Power Control Pvt. Ltd, focus on maximum client satisfaction. Our motto is to provide the best quality product in the market at competitive rates and make ourselves a world-renowned supplier of electrical items. We boast of state-of-the-art infrastructure so as to manufacture supreme quality products and totally strive to provide 100% customer satisfaction by our on-time delivery service, economic prices and highest quality product as per national and international standards.

## OUR MISSION

The company's core objectives are quality and economy. The constant effort to fulfil these objectives ensures timely upgradation of technology and keeping abreast with the developments and trends in the industry. Total client satisfaction, continuous development and high standards through innovative solutions is our mission.



## OUR CORE VALUES

A commitment to sustainability and to acting in an environmentally friendly way, we believe in letting both business and environment win by producing best quality appliances as well as design of high efficient products. A commitment to innovation and excellence, we aim to deliver our clients only the best and thus we ensure that all our products are manufactured and designed keeping in mind the latest modern trends in technology. A commitment to building strong communities, we believe in building a strong bond with our customers and grow into robust enterprises that create jobs and strengthen communities.



## ABOUT THE FOUNDER

Mr. L.S. Yadav, started the manufacturing of electrical panels 45 years ago. He later incorporated the company in the year 2000.

Ever since, he has been adding the latest technology and machinery in the manufacturing process.

Mr. Yadav, initially started with a small scale manufacturing plant in 2000 in Najafgarh, which was later expanded to Wazirabad and now Bilaspur. Acting as a helping hand, his elder son Mr. Ashish Yadav joined as director in the year 2002.

Extending the family business network, Mr. Ashwini Yadav joined office as director in the year 2006. During the year 2005, he bought a CNC machine for advanced production. Thereafter, he maintained the trend and kept on adding new machines, launching the ultra modern plant at Ansal Industrial Area in 2013.

His sustained vision and foresight led him to forming a group of companies, and establishing a strong in-house manufacturing plant. Even at this age, he is dedicated towards his work and keeps on looking for new opportunities on a regular basis.



# CERTIFICATION

## CENTRAL POWER RESEARCH INSTITUTE (Member of STL)



### TEST REPORT

Test Report No. : 2014STL/1559 Dated: 18 DEC 2014

Name and Address of the Customer : M/s L.S. Power Control Pvt. Ltd.,  
C-441, Ansal Pioneer Industrial Park,  
Village, Pathern, Bhisapur, Gurgaon - 122 105 (Haryana)

Name and Address of the Manufacturer : M/s L.S. Power Control Pvt. Ltd.,  
C-441, Ansal Pioneer Industrial Park,  
Village, Pathern, Bhisapur, Gurgaon - 122 105 (Haryana)

Particulars of Sample(s) Tested : 415V, 200 A, L.T. Panel  
Condition of sample(s) on receipt : New  
Type : Electrical Control Panel  
Main Distribution Board  
Designation : LSPC155  
Serial Number(s) : One  
Number of Sample(s) Tested : One  
CPRI sample code number(s) : ST055T21451246  
Sealing of the sample if any : No  
Particulars of tests conducted : Degree of protection IP-65

Date(s) of Test(s) : 06/12/2014 & 09/12/2014  
Test(s) in accordance with : IS: 8023 (Part-1), 1993  
Standard/specification : NIL  
Sampling Plan : NIL  
Customer's Requirement : NIL  
Deviations, if any : NIL

Name of the witnessing persons : Mr. Ashwan Kumar Yadav, Director  
Customer's Representative : NIL  
Other than Customer's Representative : NIL  
Test subcontracted with name and address of the laboratory : NONE  
Documents constituting this report (in words) : FIVE  
No. of Sheet(s) : NIL  
No. of Oscillogram(s) : NIL  
No. of Graph(s) : NIL  
No. of Photograph(s) : NIL  
No. of Test Circuit Diagram(s) : NIL  
No. of drawing(s) : ONE



(S. BHATTACHARYYA)  
JOINT DIRECTOR

(PRADEEP JAIN)  
TEST ENGINEER

Sheet 1 of 6

70KA SHORT CIRCUIT WITHSTAND

## CENTRAL POWER RESEARCH INSTITUTE (Member of STL)



### TEST REPORT

Test Report Number : 2014STL/1567 Dated: 07 JAN 2015

Name and Address of the Customer : M/s L.S. Power Control Pvt. Ltd.,  
349, A, Block G, Sushant Lok, Phase-II,  
Sector-57, Gurgaon

Name and Address of the Manufacturer : M/s L.S. Power Control Pvt. Ltd.,  
C-441, Ansal Pioneer Industrial Park,  
Village, Pathern, Bhisapur Gurgaon (H.R.)

Particulars of Sample(s) Tested : 415 V, 4000A, L.T. Switchboard  
Name : New  
Type : FMCC  
Designation : ACB Panel  
Serial Number(s) : LSPC171  
Number of Sample(s) Tested : One  
CPRI sample code number(s) : ST055T21451245  
Particulars of tests conducted : Verification of temperature rise limits

Date(s) of Test(s) : 08/12/2014  
Test(s) in accordance with : IS: 8023 (Part-1), 1993 & as per customer's requirement.  
Standard/specification : NIL  
Sampling Plan : NIL  
Customer's Requirement : Temperature rise limit on busbar shall be 70K declared by the customer as specified in the standard.  
Deviations, if any : NIL  
Test subcontracted with name and address of the laboratory : NONE

Name of the witnessing persons : 1) Mr. Ashwan Kumar Yadav, Director  
Customer's Representative : 2) Mr. D.P. Malviya, Supervisor  
Other than Customer's Representative : NIL

Documents constituting this report (in words) : SIX  
No. of Sheet(s) : NIL  
No. of Oscillogram(s) : NIL  
No. of Graph(s) : NIL  
No. of Photo (s) : NIL  
No. of Test Circuit Diagram(s) : NIL  
No. of drawing(s) : THREE



(S. BHATTACHARYYA)  
JOINT DIRECTOR

(PRADEEP JAIN)  
TEST ENGINEER

SWITCHGEAR TESTING & DEVELOPMENT STATION  
GOVERNMENT INDUSTRIAL ESTABLISHMENT  
Phone : +9101755 2500552 Fax : +9101755 2557774

IP-65(DEGREE OF PROTECTION)

## CENTRAL POWER RESEARCH INSTITUTE (MEMBER OF STL)



### TEST REPORT

Test Report Number : S2141059 Date: 24 DEC 2014

Name & address of the Customer : M/s L.S. Power Control Pvt. Ltd.,  
C-441, Ansal Pioneer Industrial Park,  
Village Pathern, Bhisapur  
Gurgaon, Haryana-122 105

Name & address of the Manufacturer : M/s L.S. Power Control Pvt. Ltd.,  
C-441, Ansal Pioneer Industrial Park,  
Village Pathern, Bhisapur  
Gurgaon, Haryana-122 105

Particulars of sample tested : L.T Switchboard  
Condition of sample on Receipt : New

Type : Power Cam Motor Control Centre  
Designation : ACB Panel  
Serial number : LSPC171  
Number of samples tested : One  
Date(s) of Test(s) : 4<sup>th</sup> December 2014  
CPRI sample code no. : ST055T21451245

Particulars of tests conducted : Verification of the short circuit withstand strength  
Test in accordance with : As per clause B.2.3 of IS: 8023 (Part-1) 1993  
Sampling plan : Not applicable  
Customer's requirement : NIL  
Deviations if any : NIL  
Name of the Witnessing persons : Shri Ashwan Kumar  
Other than Customer's representative : Nil  
Test subcontracted with address of the laboratory : None

Documents constituting this report (in words) : FIVE  
Number of sheets : Two  
Number of oscillograms : NIL  
Number of graphs : NIL  
Number of photos : One  
Number of Test circuit diagrams : Two  
Number of drawings : Three

(S. BHATTACHARYYA)  
TEST ENGINEER



(ANUPAM AWASTHI)  
JOINT DIRECTOR

TEMPERATURE RISE VERIFICATION



# CERTIFICATION

**Otabu**

## Certificate of Registration

**L.S. POWER CONTROL PVT. LTD.**

Plot No.-C-441, Ansal Pioneer Industrial Park, VIII - Patreni, Bilaspur, Gurgaon-122105, Haryana, India

has been assessed and Certified by Otabu Certification Pvt. Ltd. as meeting the requirements of:

**ISO 9001:2015**  
Quality Management System

For the following scope of activities:  
Design and Manufacturing of Electrical Panel

Issue No: 01	Revision No: 1 - NA
Date of Certification: 09 May 2019	2 <sup>nd</sup> Surveillance Due: 09 May 2021
1 <sup>st</sup> Surveillance Due: 09 May 2020	Certificate Expiry: 09 May 2022

(Subject to the company maintaining its status to the required standard)

Certificate Number: 19056163510  
Validity of this certificate can be verified at [www.otabucert.com](http://www.otabucert.com)

Validity of this Certificate is subject to Annual Surveillance audits done successfully. The Certificate of Registration remains the Property of Otabu Certification Pvt. Ltd. and shall be returned immediately upon request.  
Otabu Certification Pvt. Ltd., No. 4 Ground Floor, Phase II, Sector 14, Gurgaon, Haryana, India. New Delhi: 110028 (India)  
Email: [info@otabucert.com](mailto:info@otabucert.com) website: [www.otabucert.com](http://www.otabucert.com)

ISO 9001

**Otabu**

## Certificate of Registration

This is to certify that the

**L.S. POWER CONTROL PVT. LTD.**

(I) C - 441, 442, Ansal Pioneer Industrial Park, Bilaspur, Gurgaon, Haryana, India

has been assessed and Certified by Otabu Certification Limited as meeting the requirements of:

**OHSAS 18001:2007**  
Occupational Health & Safety Management System

For the following scope of activities:  
"Manufacturing of L.T. Panel, PLC & D. G. Synchronising Panel, Control Desk, Feeder Pillar, Power Control Center, Motor Control Center, AMF Panel, Capacitor Panel, Meter Board, Bus Duct & Rising Main"

Date of Registration	30 <sup>th</sup> October 2017
1 <sup>st</sup> Surveillance Due	29 <sup>th</sup> October 2018
2 <sup>nd</sup> Surveillance Due	29 <sup>th</sup> October 2019
Recertification due	29 <sup>th</sup> October 2020

Certificate Number: 303301017  
Validity of this certificate can be verified at [www.otabucert.co.uk](http://www.otabucert.co.uk)

**Otabu Certification Limited (UK)**

Validity of this Certificate is subject to Annual Surveillance audits done successfully. The Certificate of Registration remains the Property of Otabu Certification Limited and shall be returned immediately upon request.  
Email: [info@otabucert.co.uk](mailto:info@otabucert.co.uk) Website: [www.otabucert.co.uk](http://www.otabucert.co.uk)  
Suite 48, 88-90 Hatton Garden, London, EC1N 8PN, UK

ISO 18001

**Otabu**

## Certificate of Registration

This is to certify that the

**L.S. POWER CONTROL PVT. LTD.**

(I) C - 441, 442, Ansal Pioneer Industrial Park, Bilaspur, Gurgaon, Haryana, India

has been assessed and Certified by Otabu Certification Limited as meeting the requirements of:

**ISO 14001:2015**  
Environment Management System

For the following scope of activities:  
"Manufacturing of L.T. Panel, PLC & D. G. Synchronising Panel, Control Desk, Feeder Pillar, Power Control Center, Motor Control Center, AMF Panel, Capacitor Panel, Meter Board, Bus Duct & Rising Main"

Date of Registration	30 <sup>th</sup> October 2017
1 <sup>st</sup> Surveillance Due	29 <sup>th</sup> October 2018
2 <sup>nd</sup> Surveillance Due	29 <sup>th</sup> October 2019
Recertification due	29 <sup>th</sup> October 2020

Certificate Number: 304301017  
Validity of this certificate can be verified at [www.otabucert.co.uk](http://www.otabucert.co.uk)

**Otabu Certification Limited (UK)**

Validity of this Certificate is subject to Annual Surveillance audits done successfully. The Certificate of Registration remains the Property of Otabu Certification Limited and shall be returned immediately upon request.  
Email: [info@otabucert.co.uk](mailto:info@otabucert.co.uk) Website: [www.otabucert.co.uk](http://www.otabucert.co.uk)  
Suite 48, 88-90 Hatton Garden, London, EC1N 8PN, UK

ISO 14001



THE TI RANGE IS THE PERFECT SOLUTION FOR SUCH REQUIREMENTS. IT IS DESIGN VERIFIED AND CERTIFIED BY THIRD PARTY NABL TEST LABORATORIES. THE RANGE IS AVAILABLE IN BOTH ALUMINIUM AND COPPER BUSBARS PROVIDING FLEXIBILITY OF SELECTION TO END USERS. IT IS THE PERFECTLY BALANCED DESIGN WHICH OFFERS COMPACTNESS AND COST-EFFECTIVENESS WITHOUT COMPROMISING SAFETY AND RELIABILITY.



**LARSEN & TOUBRO**



### Certificate of Appointment

*L. S. Power Control Pvt. Ltd., Haryana*

is appointed as Franchise up to 14th April 2021  
for manufacture and sale of Low Voltage Switchgear & Controlgear  
assemblies in Ti design conforming to L&T's design and manufacturing  
guidelines with L&T supplied components & switchgear products.

Ti design is a fully type tested assembly in accordance with IEC 61439  
for Low Voltage Switchgear & Controlgear assembly.

L&T Electrical & Automation  
TC ID Number: 200-072-10204

Gitesh K. Shewal  
Vice President - Electrical Standard Products

Ti Design (TTA)





PANEL DETAILS	Standards Type designation	IEC 62271-200 VH3
VOLTAGE RATINGS	Voltage Power frequency withstand voltage Impulse withstand voltage Frequency	36 kv 70KVrms 170kVp 50/60Hz
CURRENT RATINGS	RATED CURRENT SHORT TIME WITHSTAND Short circuit making current	800A; 1250A; 2000A 25/31.5 kA 63/79kAp
DIMENSIONS	Width Depth* Height**	1000mm 2650/2950mm 2500mm
CONSTRUCTION	Partition class Loss of service continuity Degree of protection Internal Arc Classification	PM LSC-2B IP4X(Higher IP on request) IA(F,L,R), 31.5kA,1s
VCB	IEC standard Type designation Operating sequence Opening time Break time Mechanical operations Closing/tripping coil Spring charging motor Auxiliary contacts	IEC 62271-100 VY series 0-0.3sec-CO-3min-CO <35ms <3 cycles 10,000 24/48/110/220 V DC 24/48/110/220V DC/110/240V AC 6NO+6NC

## MANUFACTURING AND DESIGN

### 33 KV VCB PANEL

We offer 33 KV VCB panels. Made in draw out type, the panels can be racked out directly on the floor. VCB are type tested according to international standard IEC-62271.

1. Provision of manual and electrical spring charging in VCB.
2. VCB comes with in-built anti pumping feature.
3. Closing/ tripping coil voltage 24v DC/110v DC/220v DC.
4. Spring charging motor voltage 230v AC and 110v DC/220v DC.

VOLTAGE RATINGS	Standards Type Designation Voltage Power frequency withstand voltage Impulse withstand voltage frequency	IEC 62271-200 VH1H Up to 12 kv 28/38*kVrms 75/95*kVp 50/60 Hz
CURRENT RATINGS	Rated current Short time withstand current(3s) Short circuit making current	630/800a, 1250A, 2000A, 3150/4000A 25/26.3 kA, 40/50 kA 62.5/65.75 kAp, 100/125 kAp
DIMENSION	Width# Depth# Height	600 mm; 800 mm; 1000 mm 1570/1970/2170/2270 mm 2495mm
CONSTRUCTION	Partition class Loss of service continuity Degree of protection Internal Arc classification	2495 mm LSC-2B IP4X(Higher IP on request) A(F,L,R), up to 40/50kA, up to 1s
VCB	IEC standard Type designation Operating sequence Opening time Break time Mechanical operations Closing/tripping coil Spring charging motor Auxiliary contacts	IEC 62271-100 VK series O-0.3 sec-CO-3min-CO <35ms <3 cycles 10,000 24/48/110/220 V DC 24/48/110/220 V DC/ 110/240V AC 6NO+6NC/12NO+12NC*



## 11 KV VCB PANEL

We offer 11 KV VCB panels. Made in draw out type, the panels can be racked out directly on the floor. VCB are type tested according to international standard IEC-62271.

1. Provision of manual and electrical spring charging in VCB.
2. VCB comes with in-built anti pumping feature.
3. Closing/ tripping coil voltage 24v DC/110v DC/220v DC.
4. Spring charging motor voltage 230v AC and 110v DC/220v DC.

**L&T SWITCHGEAR**

SAFE &amp; SURE



## TTA PANEL (TI DESIGN)

The new ti range is a product of this quest. It is design verified with Aluminium and copper bus bars, providing the perfect balance of cost effectiveness, compactness and safety. Features:

1. Compliance to latest iec standard iec61439-1
2. Designed up to 4000a
3. Stringent fault withstand capacity up to 50ka for 1sec
4. Double deck busbar system
5. Ingress protection up to ip 54 and ip2x after opening door
6. A combination of choice of aluminium or copper, busbar, standardised quality
7. Design verified for safety.
8. Safer bus bar.
9. Best in class insulation.
10. Zero stray-voltage doors and panels.
11. Enhanced ingress protection.
12. No accidental contact.
13. Wide cable alleys/adequate space for cabling.
14. Easy access door.
15. Quick release system.
16. Space saving, slim panels.
17. Double front arrangement.
18. Flexible panel configurations.
19. Compact feeder modules.
20. Shared droppers.



## TTA PANEL SPECIFICATIONS

**L&T SWITCHGEAR**

SAFE & SURE

INSULATION CHARACTERISTICS		Standards	IS 8623, IEC 61439-1&2		
		Clearance	>20 mm		
		Creepage distances	>20 mm		
		Overvoltage category	2/3/4		
		Pollution degree	3		
		Field condition	Inhomogeneous(non-uniform)		
ELECTRICAL CHARACTERISTICS	VOLTAGE RATINGS	Rated operational voltage	415-690 VAC, 24-220VDC		
		Rated insulation voltage	690 V		
		Rated impulse withstand voltage	6/8 kv		
		Rated frequency	50/60 Hz		
	CURRENT RATINGS	<b>Main Horizontal busbars:</b>			
		Rated current	Up to 4000A		
		Rated peak withstand current	Up to 105kA		
		Rated short-time withstand current	Up to 50kA,1s		
		<b>Vertical distribution busbars:</b>			
		Rated current	1440A		
		Rated peak withstand current	Up to 105kA		
		Rated short-time withstand current	Up to 50kA,1s		
		MECHANICAL CHARACTERISTICS	DEGREE OF PROTECTION	<b>In accordance with IEC 60529:</b>	
				External	IP 4X/54*
Internal	IP 2X				
FORMS OF SEPARATION	As per IEC 61439-2		Form 3/*		
DIMENSIONS	Height(mm)		1800,2000,2200, 2400		
	Width(mm)		440,600,800,1000(ACB section)		
			850,1100,1400,1650,1900(Outgoing section)		
	Depth(mm)		440,600,900,1000,1100( ACB section)		
	440,600(OUTGOING SECTION)				
SURFACE TREATMENT	Structure		Alu-zinc/powder coated/painted		
	Internal components	Alu-zinc/powder coated/painted			
	External Components	Powder coated/painted			
RESISTANCE TO CORROSION	Damp heat cycling test	IEC 60068-2-30			
	Salt mist test	IEC 60068-2-11			
PLASTIC COMPONENTS	Flame retardant, self-extinguishing, halogen-free	IEC 60695-2-10, IEC 60695-2-11			





### CONVENTIONAL BUSBAR SYSTEM SPECIFICATIONS

TYPE	AIR-INSULATED
RATING OPERATING VOLTAGE	UP-TO 415V
RATED CURRENT	150 AMP. TO 2000 AMP.
SYSTEM FREQUENCY	50 HZ
DESIGN AMBIENT TEMP	45 DEGREE CELSIUS
DEGREE OF PROTECTION(IP)	54 & IP-55
RELEVANT STANDARD	IEC-60439-1&2
ENCLOSURE	1.6MM CRCA
CONDUCTOR MATERIAL	COPPER AND ALUMINUM
CONFIGURATION	3P4W,3P5W
JOINT	MULTIPLE BOLT

### SANDWICH BUS DUCT SPECIFICATIONS

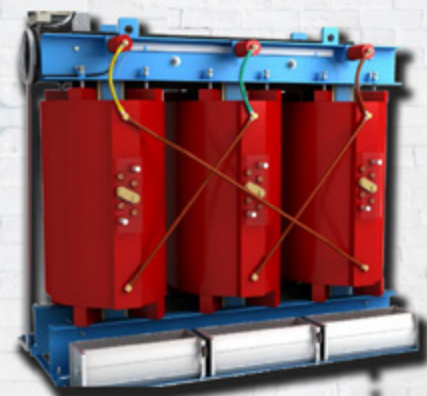
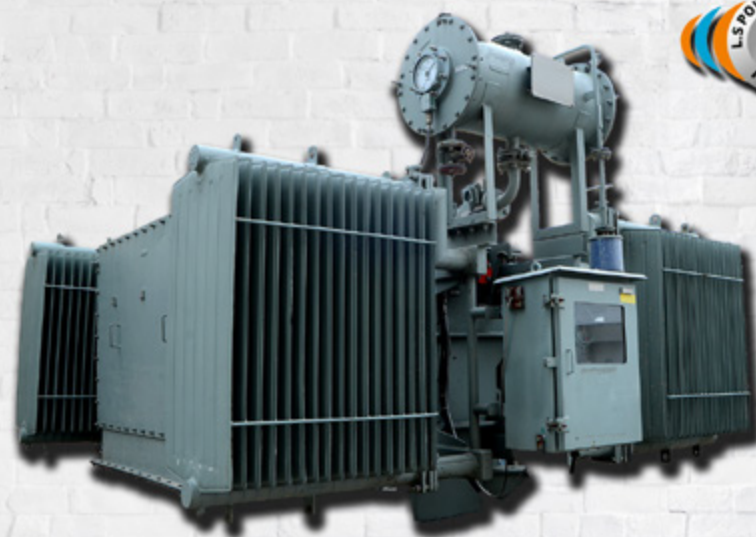
STANDARD	IEC 61439(1&2)
RATED AMP	150 AMP. TO 6600 AMP.
OPERATING VOLTAGE	415V TO 1000 VOLT, 50HZ
INSULATION VOLTAGE	1000 VOLT
FAULT LEVEL	65 KA
STANDARD LENGTH	2.5 METER
AMP. TEMP.	45 DEGREES CELSIUS
DEGREE OF PROTECTION	IP-54, IP-55
BUS BAR MATERIAL	ALUMIUM AND COPPER
ENCLOSURE	GI AND ALU.
SYSTEM	3P 3W,3P 4W,3P 5W
INSULATION CLASS	'F', POLYESTER+MICA

## BUS DUCT AND RISING MAIN

The Bus duct and rising main is a pre-fabricated enclosure consisting of aluminum and copper bus bar for phase and neutral supply and a separate earth bus bar, provided on enclosure. It is carefully crafted for integration along while installation.

It is of two types:

1. Sandwich type
2. Conventional (Air insulated) type



## TRANSFORMERS

L.S. Power Control Pvt. Ltd. manufactures a range of high quality power distribution transformers which are engineered for superior performance and assessed for dependability.

### OIL TYPE TRANSFORMERS

1. OIL TYPE UP TO 5VA, 11KV & 33 KV CLASS.
2. MULTI TAP TRANSFORMERS
3. LIGHTING TRANSFORMERS
4. DESIGN TESTED AT CPRI
5. AVR (SERVO TRANSFORMERS)

### DRY TYPE TRANSFORMERS

1. DRY TYPE & CAST RESIN UPTO 5MVA, 11KV, 33 KV CLASS
2. DESIGN TESTED AT CPRI
3. MULTI TAP TRANSFORMER UPTO 24 TAPS
4. CONVERTER DUTY TRANSFORMER
5. MAINTAINENCE FREE + MAXIMUM HEAT DISSIPATION

### OTHER TYPE

1. SOLAR APPLICATION
2. RECTIFIER TRANSFORMERS
3. BOOSTER T/F
4. WIND APPLICATION
5. FURNACE TRANSFORMER



## PACKAGE SUBSTATION

Package substations are available upto 24KV. They comprise of outdoor duty enclosure, medium voltage switchgear, distribution transformer, low voltage panel & AFPCR panel (optional) is a state of art equipment for all your power distribution requirements.'

1. Complete weather Proof solution
2. Ready to position solution
3. Four lifting eyes for ease of lifting
4. Minimum site work

RANGE 100KVA TO 2000 KVA, 11 KV CLASS



Model M21830L	10 KVA	15 KVA	20KVA	30KV A	40 KVA	60KVA	80KVA	100KVA	120KVA	150KVA	200KV A	300KVA	400KVA
Nominal Capacity(KVA)	10	15	20	30	40	60	80	100	120	150	200	300	400
Single-phase maximum current input(A)	19	29	38	57	76	114	152	180	227	300	379	568	609
Works as well as the principle	On-Line power supply, static bypass switch(uninterrupted switch), double conversion technology												
Ac input parameters	Number of phase	Three phase + N + G											
	Nominal voltage	380V AC±25%											
	Nominal frequency	50 Hz± 0.5%, 60Hz±0.5%											
	The voltage harmonic distortion	<10%											
The Bypass	Soft start	0-100%Sec											
	Number of phase	Three-phase + R + G											
	Nominal voltage	380VAC± 15%											
	Nominal frequency	50 Hz/60Hz± 0.5%											
The Battery	Inverter/ bypass(dimension)	0ms											
	Number of battery unit	33 knots/ 12v series											
	Nominal battery voltage	160V											
	Maximum discharge current (A)	25	38	51	76	101	152	203	253	305	405	550	700
Inverter	Flood charging voltage	405V(3 months automatic battery to charge, charge voltage 435 V)											
	Charging current	1A-50 A(according to battery capacity setting)											
	The load power factor	0.8 (0.9 optional)											
	Number of phase	Three-phase + N + G											
	Nominal voltage	380VAC± 1% (The steady-state load), 380VAC± 3% (The load fluctuation)											
	Nominal frequency	50 Hz± 0.05%, 60Hz± 0.05% (better power)											
	Frequency stability: When not in sync	±0.05%											
	When the frequency stability synchronizes on	±0.5%											
	Output waveform	Sine wave											
	Total harmonic distortion	Linear load < 2%; The nonlinear load < 4%											
	Dynamic load voltage transients	<5% (from 0 to 100% more)											
	Transient recovery time	<10ms (±5%)											
	Unbalanced voltage	±1% (balance the load voltage), ±0.5% (unbalanced load)											
	Overload capacity	Overload for ten min later turn the bypass, 125% 150% overload lasts 1 min after bypass											
The inverter efficiency and load by 100%	95%												
The system structure	Total efficiency of 100% load	91% , 95%, ECO											
	Computer communication interface	Rs 232, (Rs485, network remote monitoring software)											
	Operating temperature	0-40 degree celsius											
	Relative humidity	0-90% without any condensation											
	Running high	<1500m(each additional 100 meters power fall by 1%, the highest 4000meters)											
	Cooling way	Forced ventilation (temperature control)											
	Noise (dB)	45											
	The body color	black											
	The input cable	The battery/back											
	Easy to maintain	On/about/in front of the plane can be opened											
	Input device	Terminal row											
The output device	Terminal row												
Size (318x84)	725x450x1135	855x450x1235	715x450x1170	855x450x1235	1100x450x1700	1200x1500x1800	1300x1800x1800						
The host weight (kg)	200	250	340	400	480	650	900	1100	1300	1480	2000	2100	2900
Option to	Rs 485, inverter board, network management system, battery testing system, lightning protection devices for option, is required to order												



## UPS

### ON LINE-INTERACTIVE VI (VOLTAGE INDEPENDENT)

Offline UPS system channels the incoming mains power, via a filter, directly to the load. As soon as the incoming power is outside tolerance, the UPS switches to battery operation.

1PHASE OR 3-PH  
PHASE AUTO SERIES TYPE  
3-PHASE ISOLATION TYPE

### OFF LINE VFD (VOLTAGE FREQUENCY DEPENDENT)

On Line-interactive UPS system channels the incoming mains power, via an AVR-automatic voltage regulator, directly to the load. Compared to off-line, the system can handle much larger voltage before switching to battery operation.

Offline UPS system channels the incoming mains power, via a filter, directly to the load. As soon as the incoming power is outside tolerance, the UPS switches to battery





## MAIN L.T PANEL (PCC)

The Main LT Panel (PCC) is applied in Power Distribution & Control Of Main & D.G Supply.



## MAIN L.T PANEL (PCC)

Rated Voltage	415 V Ac To 1000 V Ac
Rated Current	Up To 6300 Amp.
Short Time Rating	Up To 70 Ka For 1 Sec
Phase/Frequency	3 Phase/50hz
Type Tested	Short Circuit Current; Temp Rise; Degree Of Protection
Reference Standard	Iec: 61439-1, 2009, Is: 8623
Form Of Separation	3b/4b
Bus Bar	Aluminum And Copper
Size Of Bay	2275 Mm (height); 1200 Mm (width); 1600 Mm (depth)
Ambient Temp.	45 Degree Celsius
Feeder Configuration	Fully Draw Out/Semi Draw Out/Fixed Type



## MAIN L.T PANEL (MCC)

Rated Voltage	415 V Ac To 1000 V Ac
Rated Current	Up To 6300 Amp.
Short Time Rating	Up To 70 Ka For 1 Sec
Phase/Frequency	3 Phase/50hz
Type Tested	Short Circuit Current; Temp Rise; Degree Of Protection
Reference Standard	Iec: 61439-1, 2009, Is: 8623
Form Of Separation	3b/4b
Bus Bar	Aluminum And Copper
Size Of Bay	2275 Mm (height); 1200 Mm (width); 1600 Mm (depth)
Ambient Temp.	45 Degree Celsius
Feeder Configuration	Fully Draw Out/Semi Draw Out/Fixed Type



## D.G SYNCHRONIZATION PANEL

1. Rated Voltage	415 V AC to 1000 V AC
2. Rated current	Up to 6300 Amp.
3. Short time rating	Up to 70 KA for 1 sec
4. Phase/frequency	3 phase/50Hz
5. Type Tested	Short Circuit current; Temp rise; Degree of protection
6. Reference standard	IEC: 61439-1, 2009, IS: 8623
7. Form Of Separation	3B/4B
8. Bus bar	Aluminum and Copper
9. Size of Bay	2275 mm (Height); 1200 mm (Width); 1600 mm (Depth)
10. Ambient temp.	45 degree Celsius
11. Feeder Configuration	Fully draw out/semi draw out/fixed type



## CAPACITOR PANEL

1. RATED VOLTAGE
2. RATED CURRENT
3. SHORT TIME RATING
4. PHASE/FREQUENCY
5. TYPE TESTED
6. REFERENCE STANDARD
7. FORM OF SEPERATION
8. BUS BAR
9. SIZE OF BAY
10. AMBIENT TEMPERATURE
11. FEEDER CONFIGURATION
12. APPLICATION

415V AC TO 1000V AC  
UP TO 6300 AMP.  
UP TO 70 KA FOR 1 SEC  
3 PHASE/50HZ  
SHORT CIRCUIT CURRENT/ TEMP RISE/ DEGREE OF PROTECTION  
IEC:61439-1, 2009, IS:8623  
3B/ 4B  
ALUMINUM AND COPPER  
2275 MM(H); 1200 MM (W); 1600 MM (D)  
45 DEGREE CELSIUS  
FULLY DRAW OUT/ SEMI DRAW OUT/ FIXED TYPE  
MCC-PROTECTION & CONTROL OF MOTORS; PCC- POWER DISTRIBUTION  
& CONTROL OF MAIN & D.G SUPPLY



## AMF PANELS

We design and manufacture our own AMF panels, often as part of a comprehensive automatic standby power solution which links ATS, UPS and standby generators with remote monitoring and associated security and safety features.



## DOUBLE BUSBAR PANELS

HV bus duct – 11 kV / 22 kV / 33 kV – metal enclosed, segregated phase and non-segregated phase bus duct system ranging from 600 Amp. to 4000 Amp. These panels are widely used to control and monitor power supply.

### Features:

- Reliable operations
- Excellent functionality
- High conductivity



## ACDB

The main objective of the ACDB is to eliminate the operation of the load at the immediate PCU O/P end and also provide flexible operation of different panel loads.

The ACDB box is made of epoxy powder coated metal casting.

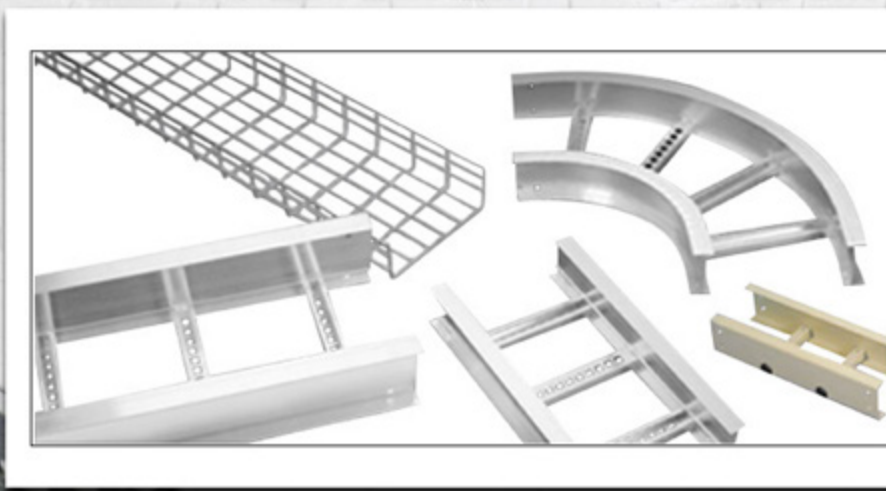
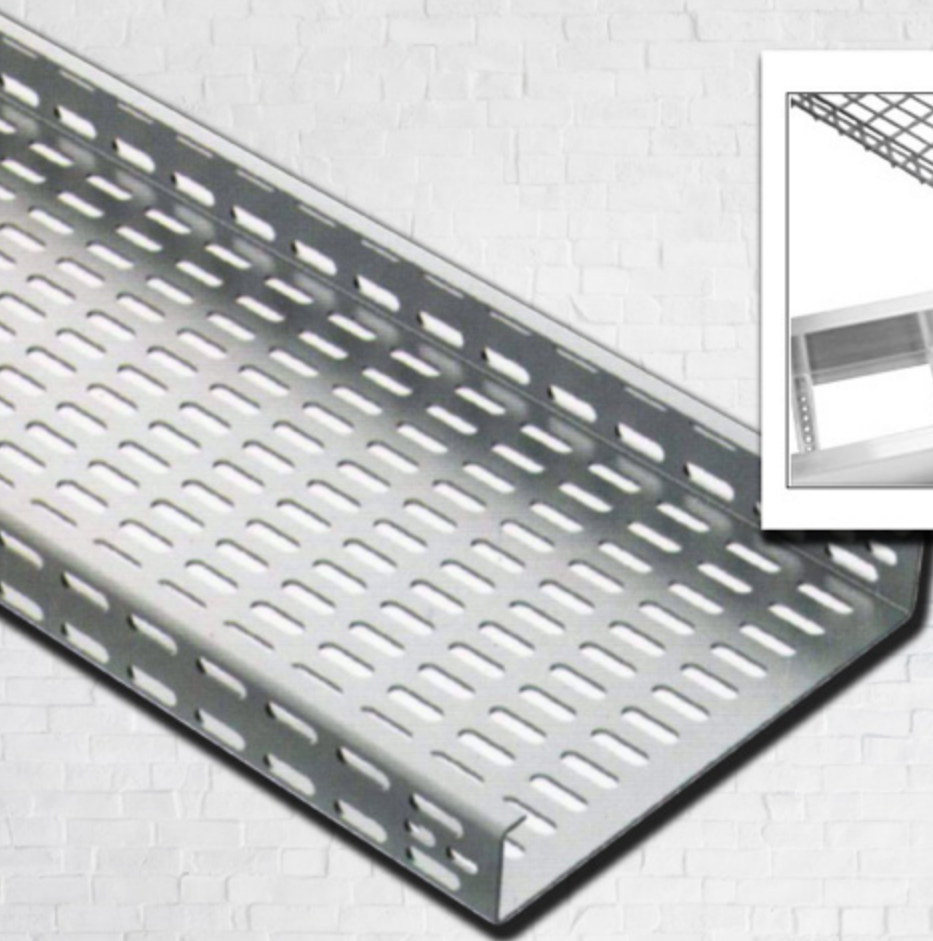




## DCDB

To ensure maximum protection to the sophisticated panels, it has provision for surge protection in the box along with fuses.

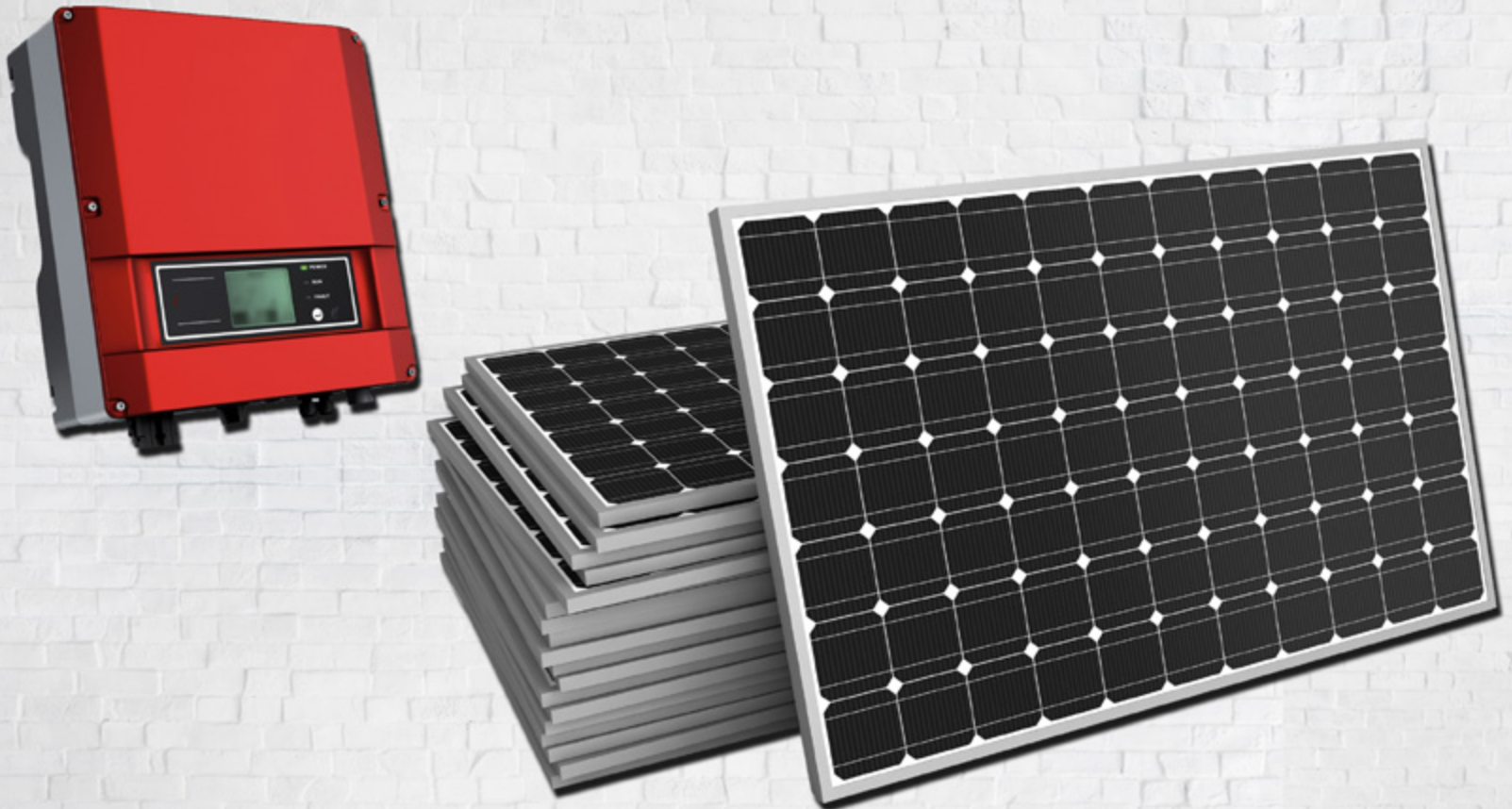
The DCDB incorporates isolator/Breaker to switch off the system during fault. It also has surge protection to save the system from any surges occurred due to fault or any other phenomenon.



## CABLE TRAYS

L.S. Power Control Pvt. Ltd. is the most trusted and reputed cable tray manufacturer. Our cable trays are a great solution for all commercial and industrial structures. We use advanced technology in manufacturing these cable trays that nullify the risk of short-circuits and provide safe working environment and are of high quality with reasonable pricing.

**TYPES**      • MESH TYPE CABLE TRAY      • LADDER TYPE CABLE TRAY      • UNPERFORATED CABLE TRAY      • PERFORATED CABLE TRAY  
**SIZES**        • 50MM TO 1000MM WIDTH      • 2500MM TO 3000MM LENGTH      • 35MM TO 200MM DEPTH  
**SHEET THICKNESS:**                      1MM, 1.2MM, 1.6MM, 2MM, 2.5MM, 3MM  
**ACCESSORIES:** BARRIER STRIP, BARRIER STRIP CONNECTOR, JOINT CONNECTOR, HOLD DOWN CLAMP, EARTHING TERMINAL, WALL CLAMP, SIDE HOLDER, COVER, END CAP



## SOLAR

Featuring mono & poly panels which made of A grade perk cells and ultra cleared tempered glasses that do not break easily and gives 22% higher efficiency even in low light and cloudy weather.

The main features include 4 busbars, 36 cells. The junction box is given with MC4 compatible cable connector for higher module efficiency.



## WATER HEATERS

Introducing the first Intelligent water heating system in India. A complete innovative product, which is a perfect blend of technology and luxury. With its appearance, the water heating system will reach to a next level, where safety, energy saving, appearance, etc. will be at a height. Our central water heating system comes with bundles of features.

- Innovative technology, design and space saving.
- Energy efficient
- Anode bar protection
- Color LED screen with full integrated central
- Heating tube specifications

### AVAILABLES MODELS

- PRAGER SERIES: Import OAK cabinet & royal luxury experience.
- EUROPEAN STYLE SERIES: Import OAK cabinet & European Luxury experience.
- ELEGANCE SERIES: fingerless stainless steel, import buffer type draws exquisite texture, fashionable appearance.
- VERSAILLES SERIES: Composite board solid wood stowing warnish cabinet exquisite texture and fashionable appearance.



## WATER HEATING ELEMENTS

Introducing a wide array of Water heating elements.

These broad spectrum of products are well acclaimed for their features like sturdy built up, lesser maintenance, corrosion resistance, enhanced performance, and durability.

## DESIGN AND ENGINEERING



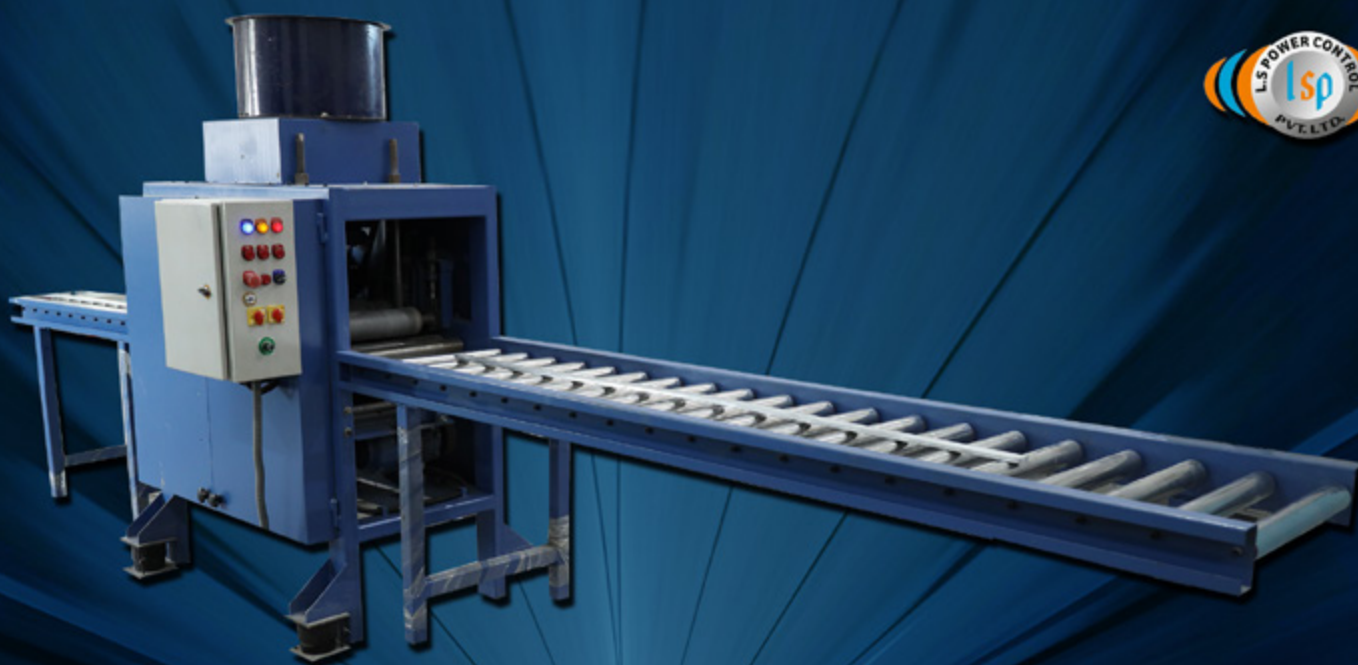
L.S. Power Control Pvt. Ltd. designs and engineers its products with an aim to provide human safety, utmost quality, technical superiority and timely delivery. With this commitment, we enjoy an enviable market share in India and abroad.

Our huge manufacturing line is well-equipped with latest machines procured from the renowned brands like AMADA, YANGLI, ISGEC HACO, HGT J401. We aim to provide complete support systems to fulfill the clients needs in flawless and efficient manner.



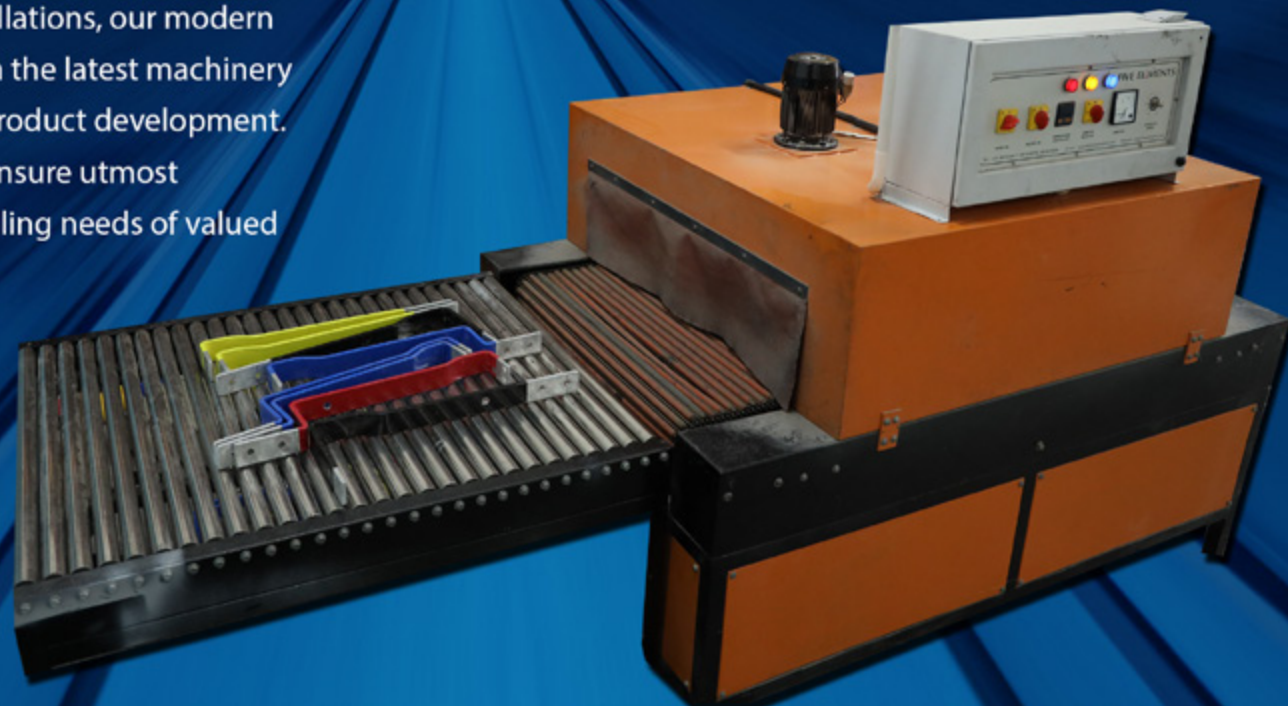


*"Every minute at L.S. Power Control Pvt. Ltd., we are developing and touching excellence. Step by step, while moving forward we realize our vision through the nature of our product"*



## WE BOAST OF BEING A LEADING MANUFACTURER

We have established ourselves as one of the leading manufacturers and one of the renowned names in electrical panel manufacturing segment. With integrated and future ready installations, our modern plant is equipped with the latest machinery for premium quality product development. Expert professionals ensure utmost satisfaction while fulfilling needs of valued customers.







## PLANT MACHINERY

### TURRET PUNCH TTP AMADA

The CNC turret punch machine is used to achieve desired punch in sheet as per design or approved drawing. The plant has two main machines:

(Make : AMADA Model : AE2510)

A single AC servo drive turret punching machine. It is highly rigid frame with intelligent, reliable and easy to use and control. It has pneumatic tool balancer which makes the loading and unloading of large station tools faster, easier and safer. Machine includes special feature like eliminated slug pull and high speed marking followed by other salient features. Wherein the machine capacity is concerned, the unit has a working size of 1270x2500MM, current speed of 130 punches per minute, maximum plate thickness of 6.35MM and maximum punch station of 45 Nos.

## CNC BENDING MACHINE

The press machine used to bend the sheet as per design or drawing. Superceding the conventional press break in terms of accuracy, it carries out uniform bending throughout the length.

Make: Amada Model: RGM2

Interlocked frame machine achieving less distortion and deflection for a long duration. It is a centrally guided roller and pressure application system which accurately maintains parallelism.

Moreover, the machine has a capacity of 1000 KN, working size of 3100 for upto 4.5 MM thick sheet along with 2080 for 6 MM thickness, bending speed of 13 strokes per minute and maximum thickness of 6 MM





## CNC SEAL GLUING MACHINE

The machine employees self developed systems, digital control panel, responsive and stable operation. The system interface with USB port for mobile storage device. The intelligent operation and simulation function helps preventing processing errors, intelligent fault alarm function prevents equipment damage during operation from unseen machine fault, intelligent low pressure alarm function helps to eliminate product failure due to pressure instability. The salient features include simple operation, great saving on cost & time, efficient productivity to fulfill market demand.



## YANGLI T30

The machine is highly accurate and adjustable with gear mechanism, German H+L hydraulic station with high performance capability. It has a special Japanese FANUC oil CNC control. The working capacity consists of working size 1250x2500MM, turret speed of 106 punches per minute, maximum plate thickness of 6.35MM and maximum punch station of 30 Nos.



## **YANGLI WC 67K 80X3200**

The double axle special CNC system for press break, hydraulic top drive with stepless pressure adjustment. Wherein the machine capacity is 800 KN with working size of 3200MM, Speed of 10 strokes per minute and maximum sheet thickness of 6MM.



## TESTING EQUIPMENTS

Testing equipments possessed by us include Insulation tester, HV test equipment, Digital powder costing thickness tester, Tong tester with multi meter, Continuity tester, Digital analogue and a screw gauge vernier caliper.



## MIG WELDING MACHINE & POWDER COATING AREA

Arc gas metal also known as MIG, can achieve high quality welding without slag as it refrains from using any kind of flux. Faster welding process guarantees premium quality weld using MIG welding. Total quantity is 12 Nos and is made by Electro Kokotawa, model WT-250. The salient features include gas cooling, torch length of 3 MTR and wire size of 0.8 MM.

The plant is also equipped with a state of art power coating booth. It is fully integrated powder coating process offering additional surface finishing that mets the ever growing demands of customers in the realm of taste and colours adhering to industry standards. The pre-treatment process includes seven tank chemicals which completely removes dust, rust and oil making the surface appropriate for powder coating.





LS Power Control Pvt Ltd's products are manufactured as per the international quality standards and are at par with any international counterparts.

We ensure our products are monitored at each stage of production and score well on all key parameters. We are well equipped with high tech machineries & qualified personnel to manufacture state-of-the-art products.







## RESEARCH AND DEVELOPMENT

It's our objective to be the most customer-centric company globally, admired for its products, people, partnership and performance.

We possess the power of measuring, controlling and analyzing the current trends in manufacturing and design segment which gives us an upper hand in R & D.





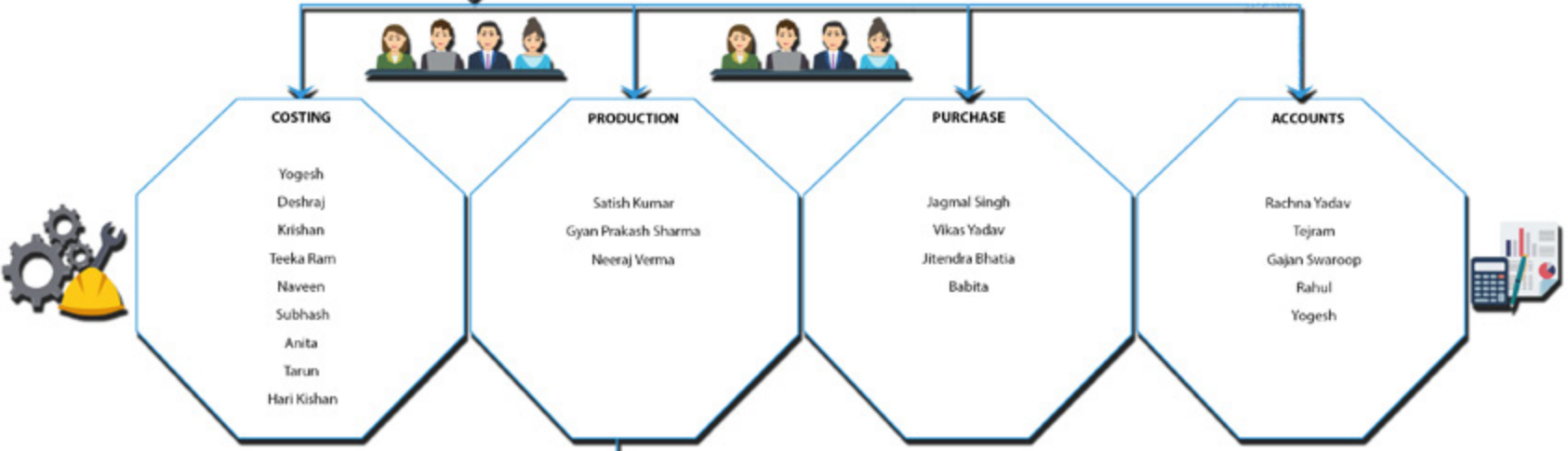
## LOGISTICS

*Logistics comprises the means and arrangements which work out the plans of strategy and tactics. Strategy decides where to act; logistics brings the troops to this point.*

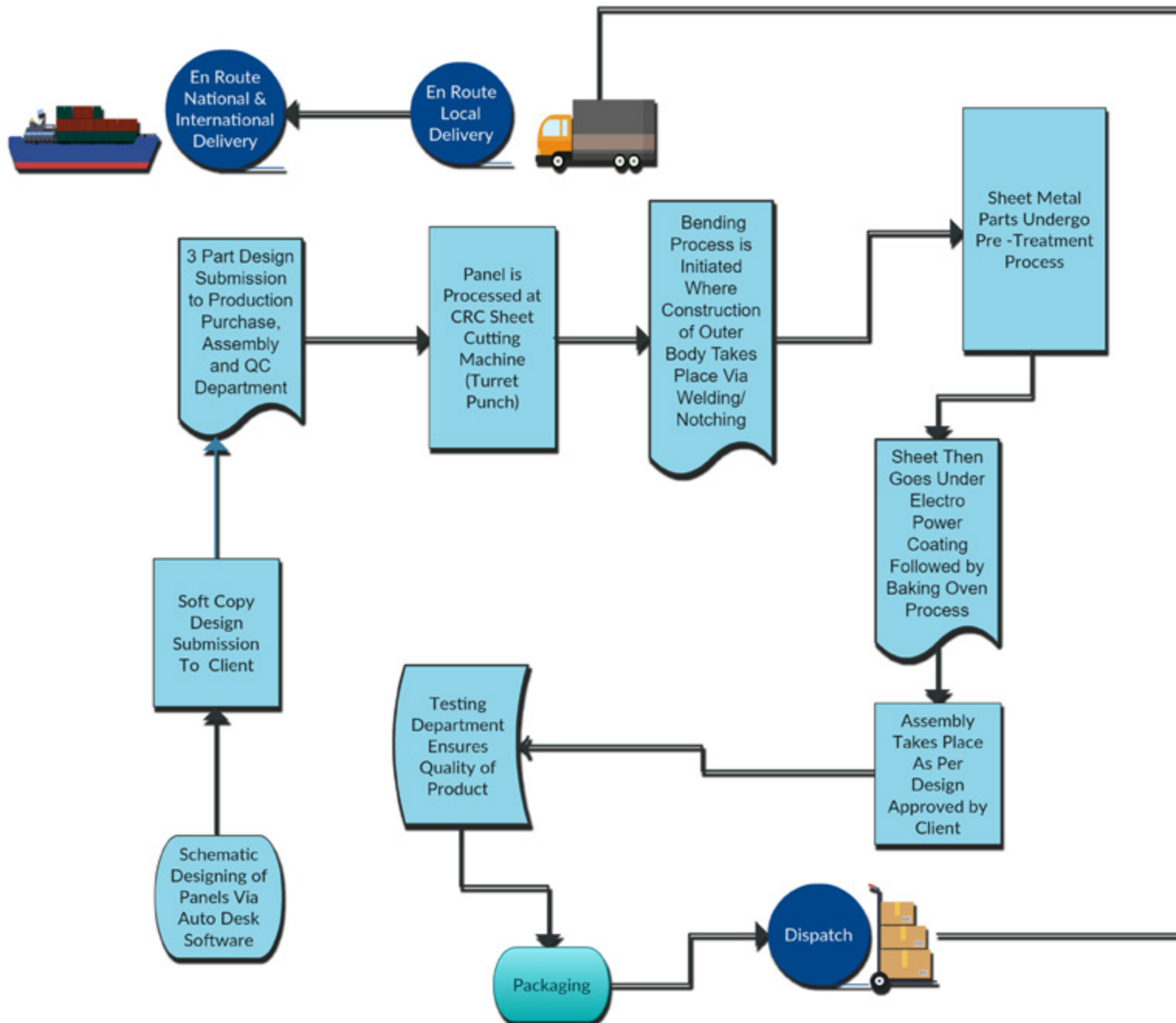




# ORGANISATIONAL HIERARCHY



# MANUFACTURING & DELIVERY PROCESS





# OUR CLIENTELE

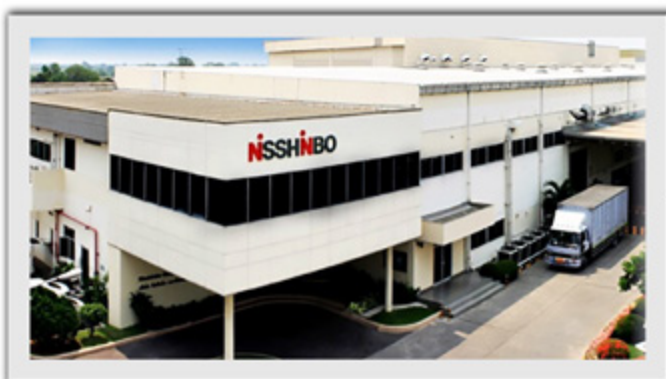


Just like any other valuable company, we have built a strong and steady clientele while providing them with excellent customer service. We define ourselves by either what our clients desire or what they believe they'll require for the future.

We define ourselves by our client, not our competitor!



## CLIENT INSIGHTS





## CLIENT INSIGHTS

**Vsun**<sup>®</sup>

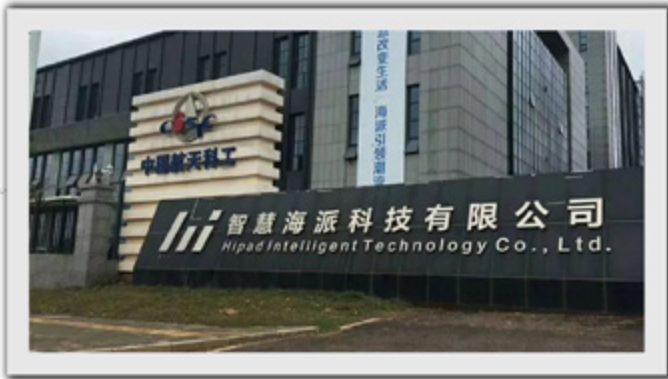


**Txd** 同兴达<sup>®</sup>  
股票代码: 002845

**HT HAITIAN**  
INTERNATIONAL



# CLIENT INSIGHTS



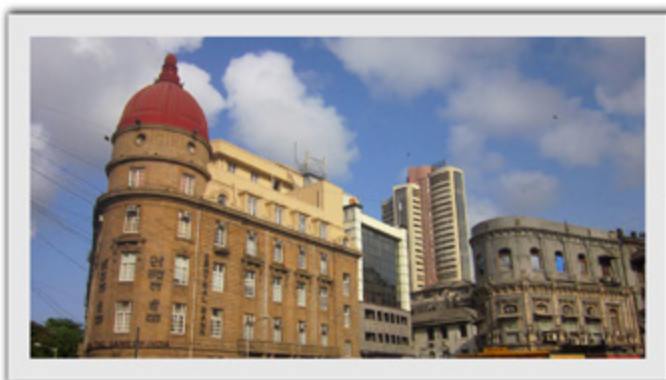




## CLIENT INSIGHTS



## CLIENT INSIGHTS



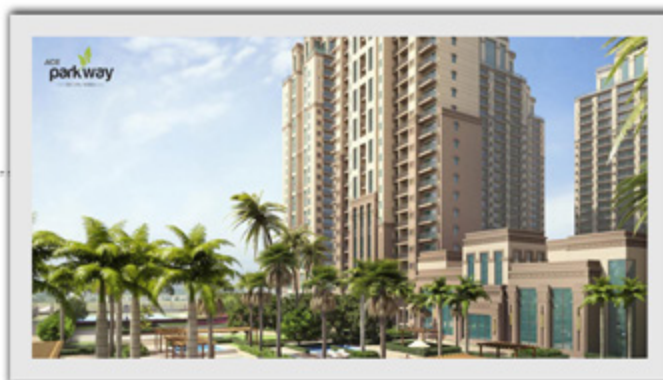


## CLIENT INSIGHTS



## CLIENT INSIGHTS

ACE  
**parkway**  
— SEC.150, NOIDA —



**ACEASPIRE**  
2/3 BHK APARTMENTS  
GREATER NOIDA (WEST)

arihant  
**arden**  
Gh-07A, Sec-1, Noida East, Gz, Noida





## CLIENT INSIGHTS

AMBIENCE  
CREACIONS

QUALITY FOR SURVIVE

Sector - 22, Gurgaon



AMBIENCE

TIVERTON

CLASS OF IT'S OWN

ACE  
golfshire

SECTOR - 150, NOIDA



## CLIENT INSIGHTS



**PYRAMID**  
INFRA TECH PVT. LTD.



**ikebana** Gulshan  
3 bhk homes@sec.143 noida



**SUN-VISION**  
REAL ESTATE - HOSPITALITY  
*The Vision defines our business*





## CLIENT INSIGHTS

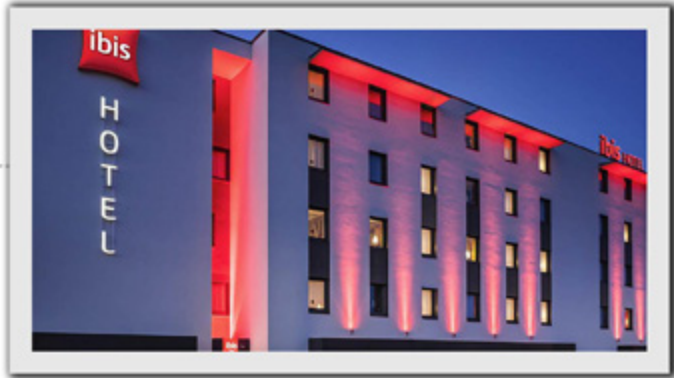


## CLIENT INSIGHTS





## CLIENT INSIGHTS



# CLIENT INSIGHTS



## CLIENT INSIGHTS



## CORPORATE SECTOR



BHARTI AIRTEL LTD.	SUN LIFE FINANCIAL
CEC INTERNATIONAL CORP INDIA PVT. LTD.	BLUE STAR LTD
REGARDS NETWORK SOLUTION	MAHINDRA, MAHINDRA WORLD CITY, JAIPUR
GAIL DATA CENTRE, NOIDA	INTERGLOBE HOTELS PVT. LTD.
WIPRO, SARITA VIHAR, DELHI	IBIS KOLKATA, KOLKATA
WELSPUN, 55MW, RAJASTHAN SOLAR POWER	FLIPKART
EEL INDIA LTD	RE-NEW POWER LIMITED
INDOSPACE LOGISTIC PARK, JHAJJAR	LOGIX CITY CENTRE
NXTRA DATA CENTRE, CHENNAI	ATRIO HOTEL, NEW DELHI
DELL INTERNATIONAL SERVICES PVT. LTD., GUJRAT	IBIS DIAL, DELHI AERO CITY
NXTRA DATA CENTRE, IMT MANESAR	INNOVATIVE TECHNOLOGY PARK PVT. LTD.
DELL INTERNATIONAL SERVICES PVT. LTD., BANGALORE	VIKAS HOSPITAL, NEW DELHI
CAMSOLINE CHENNAI	PARADISE MALL, DELHI
JUST DIAL, HEAD OFFIUCE, NOIDA	PARK HOSPITAL
ALCATELLUCENT, CHENNAI	AROGYA HOSPITAL, HISAR
VODAFONE ESSAR MOBILE SERVICES LTD	SHAPOORJI PALLONJI AND COMPANY PVT. LTD.
COGNIZANT TECHNOLOGY SERVICES CHENNAI	OM SHANTI MEDICARE HOSPITAL
DELL INTERNATIONAL SERVICES PVT. LTD. HUGLI, KARNATAKA	AKASH HEALTHCARE HOSPITAL
SCHNEIDER ELECTRIC, PROJECT: ELDECO	ZEE NETWORK, BHUVNESHWAR, ODISHA
SCHNEIDER ELECTRIC SERVICES: IDEA CELLULAR LTD.	SONY PICTURES NETWORK INDIA PVT LTD
TATA SKY REPAIR CENTERS GUWAHATI, AHMEDABAD & MUMBAI	ABP NEWS, NOIDA
SCHNEIDER ELECTRIC, PROJECT: AMITY UNIVERSITY, NOIDA	ALCATEL LUCENT (NOKIA)
SAMSUNG INDIA PVT. LTD, SEC – 62 NOIDA	ICICI BANK LTD, CORPORATE
EMERSON NETWORK POWER (INDIA) PVT. LTD.	TATA TELESERVICES LIMITED
IDEA CELLULAR LTD. PROJECT: GUWAHATI	WELSPUN, 8MW, SOLAR POWER PLANT
COGNIZANT TECHNOLOGY SERVICES, PUNE	STERLING WILSON PVT. LTD.
LANCO AMARKANTAK THERMAL POWER PROJECH	SIEMENS LTD.



## INDUSTRIAL SECTOR

HOLITECH INDIA PVT. LTD.	UNITED SPIRITS LTD. UDAIPUR, RAJASTHAN.
MCM MOBILE INDIA PVT LTD	VIMAL MOULDERS INDIA PVT. LTD. BAWAL & MANESAR
RENEW SOLAR ENERGY PVT LTD.	NISSHINBO MECHATRONICS INC. MANESAR PLANT
TXD INDIA TECHNOLOGY PVT LTD.	STERICAT GUTSTRINGS (P) LTD, IMT MANESAR
MERCURIO PALLIA AUTO WORKS PVT. LTD	CONCORD MOTORS PVT. LTD.
CNR PIONEER ELECTRIC PVT. LTD. BAWAL	JK CEMENT LTD. NEW DELHI
ASK AUTO, INDUSTRIAL AREA, BANGLORE	JBM AUTO LTD. PATHREEDI
RIELLO PCI POWER INDIA LTD. MANESAR, SEC – 8, GURUGRAM	BAJAJ MOTORS LTD PROJECT: MICROTEK FORGING
ASK AUTO, IMT MANESAR , GURUGRAM	BOSS GEARS LTD, GURUGRAM LUMAX AUTOMOTIVE SYSTEMS,
SILK – N- FAB PVT. LTD., OMT MANESAR, GURUGRAM	FARIDABAD
MECH TECH FAB PVT. LTD. KHANDSA ROAD, GURUGRAM	KCI NEELKANTH POLYMER LTD. RICCO INDUSTRIAL AREA
MEGA RUBBER PVT. LTD. IMT MANESAR	YKK LIMITED, GURUGRAM
RELIANCE INDUSTRIES LTD	UNIPRODUCTS MDIA GUJARAT.
MARUTI SUZUKI INDIA. LTD.	MOTHERSON SUMI NOIDA.
AIR LIQUID INDIA HOLDINGS PVT. LTD. ROORKEE, UTTRAKHAND	BECHTEL GURUGRAM.
PETER SURGICAL. (FORMERLY STERICAT GUTSTRINGS) MANESAR	PRICOL LIMITED
NEW HOLLAND TEACTORS, GREATER NOIDA	YUHUA ELECTRIC APPLIANCES INDIA PVT. LTD.
NEC FOOD PROCESSING PVT LTD. GUWAHATI	KAI MOTORS, KARNATAKA



## PUBLIC SECTOR

CENTRAL BANK OF INDIA MUMBAI, MAHARASHTRA	HCL, MPSPDC, BHOPAL, M.P
CENTRAL BANK OF INDIA HYDERABAD, TELENAGANA STATE	ASSAM POWER DISTRIBUTION COMPANY LTD. FARIDABAD.
RAILTEL CORPORATION OF INDIA LIMITED, HYDERABAD	AIRPORT METRO DEPOT,
BHARAT PETROLEUM CORPORATION LIMITED PROJECT:	DELHI METRO RAIL CORPORATION NEW DELHI
BPCL RESEARCH & DEVELOPMENT CENTER, NOIDA, U.P	RSIL, JODHPUR, RAJASTHAN
BHUTAN TELECOM. THIMPU, BHUTAN	OM C.G.H.S LTD. SEC- 51, GURUGRAM.
IIT KHARAGPUR, WEST BENGAL	NEW HARYANA OFFICERS CGHS LTD. PANCHKULA HR
INDIAN OIL CORPORATION LTD, NOIDA U.P	LOADR KRISHNA C.G.H.S. PVT. LTD GURUGRAM
5 MW SOLAR PLANT AT RIICO, NEEMRANA, RAJASTHAN	SEEKERS WELFARE HOUSING, SECTOR – 43, GURUGRAM HR
NOIDA POWER COMPANY PVT LTD ,NOIDA	BHARAT PUMP ROHTAK, PUBLIC SECTOR
EMERSON NETWORK POWER (INDIA)PVT LTD, PROJECT:	KEDAR C. G.H.S, SECTOR- 39, GURUGRAM
APDCL AGARTALA, TRIPURA	CITIZEN WELFARE CGHS LTD. SEC-51, GURUGRAM
BHUTAN TELECOM, BHUTAN	



## REAL ESTATE

ATS TRIUMPH & DOLCE HOUSING	NARANG CONSTRUCTION & FINANCIER PVT. LTD.	VATIKA NEXT GURUGRAM
GULSHAN HOMZ INFRASTRUCTURE PVT. LTD.	KUNJ VIHAR GROUP HOUSING SOCIETY LTD	AVALON HOMES AT BHIWADI
GULSHAN LKEBANA NOIDA	JAYPEE PAVILION TOWER, GREATER NOIDA	DLF SILVER OAKS
BAANI CITY CENTER SEC – 63 (BAANI GROUP )	BERRY DEVELOPERS & INFRASTRUCTURE PVT. LTD.	ORCHID CONSTRUCTION
BAANI CENTER POINT SEC – 80 (BAANI GROUP)	DLF HOME DEVELOPERS LIMITED	ANSAL PVT LTD
ARIHANT ARDEN GREATER NOIDA WEST U.P.	DLF GOLF CLUB, PHASE – V, GURUGRAM	GODREJ ESTATE DEVOLPERS, GODREJ GOLF
INOVATIVE TECHNO PARK RESEARCH CENTER	RELIABLE REALTECH PVT LTD.	FLORIDAA AFFORDABLE HOUSING
ANTRIKSH HEIGHT SEC – 84, GURUGRAM	DWARKADHIS PROJECTS PVT LTD	PIONEER URBAN LAND & INFRA, GURUGRAM
ANTRIKSH CANBALL & FOREST SEC – 77, NOIDA	ANTRIKSH HEIGHTS	N.G. CONSTRUCTION (PVT) LTD
ANTRIKSH GOLF VIEW – 1 & 2, SEC – 78, NOIDA	DWARKADHIS CITY (TOWN SHIP) DHARUHERA	KUNG VIHAR GRIUP HOUSING SOCIETY LTD
UPPAL QVC REALTY PVT. LTD. GURUGRAM	SHRI GROUP INFRASTRUCTURE PVT. LTD.	BDI SUNSHINE CITY, BHIWADI
GEOTECH HOMZ PVT. LTD., NOIDA	SKY GARDEN AT NOIDA EXTENTION, (U.P)	ANTRIKSH ENGINEERS CONTRUCTION CORP.
AISHWARYAM HOMZ PVT. LTD., NOIDA	JRC GRID ENGINEERS PVT. LTD.	F-8, NOIDA
OASIS BUILDMART (INDIA), VENETIA HEIGHTS	TOWNSHIP “DREAM TERRACES NEEMRANA	VKR CONSTRUCTION PVT LTD,
FERROUS INFRASTRUCTURE PVT. LTD. FARIDABAD	SUPERTECH LIMITED	AMBIENCE TIVERTON
AAR CITY REGENCY PARK, HISAR, HARYANA	UP COUNTRY NOIDA.	ARIHANT AMBAR, GR. NOIDA
AAR CITY REGENCY PARK GROUP HOUSING, NOIDA	MAX HEIGHT, SONEPAT	EXTENSION (WEST), U.P
ACE GOLF SHIRE SEC – 150, NOIDA	PIONEER URBON LAND & INFRASTRUCTURE	ADITYA GROUP NEW DELHI.
ACE PLATINUM SEC – ZETA 1, GREATER NOIDA	ZION PROMOTER SEC – 48, 78 & 89 FARIDABAD	URBAN HOMES REALCON GHAZIABAD
ACE ASPIRE NOIDA WEST GREATER NOIDA	SUN VALLEY GWALLOR, M.P.	ROAD, FORT, MUMBAI, MAHARASHTRA.
ACE STUDIO SEC – 126, NOIDA	MONA TOWNSHIPS & GREEN PVT. LTD.	AMRAPALI YOJNA, HARDOI
MORPHEUS PROJECT	OMKARA DEVELOPERS PVT LTD	SUN VISION MALL SECTOR – 51, GURUGRAM
R-TECH INFRASTRUCTURE PVT. LTD.	JAI SIYA RAM PVT LTD.	AMBIENCE PVT. LTD.NEW DELHI.
CAPITAL HIGH STREET, RIICO LA, BHIWADI	TULIP INFRATECH PVT LTD. SEC – 18 GURUGRAM	AMBIENCE CREACIONS HOUSING GURUGRAM,
R-TECH CAPITAL GALLERIA, RIICO LA, BHIWADI	TULIP ORANGE & IVORY SEC – 70, GURUGRAM	MAXHEIGHTS PROMOTERS PVT. LTD.
R-TECH CAPITAL GREEN, BHIWADI	TULIP WHITE SEC – 69, GURUGRAM	MAX HEIGHTS MAJESTIC, SUN CITY, JAIPUR,
MAX HEIGHT DREAM HOMZ, SONEPAT	TULIP ACE GURUGRAM	VKR CONSTRUCTION PVT LTD

# FACTORY LICENSE, POWER GRID LICENSE, A CLASS ELECTRICAL CONTRACTOR LICENSE & COMPANY PERFORMANCE CERTIFICATE



**BIP ID : 12228**  
Application ID : 37965 Issued On: 25-01-2019

**CHIEF INSPECTOR OF FACTORIES, HARYANA**

**RENEWAL OF FACTORY LICENCE**

उद्योगों में लक्ष्मण शक्ति प्रोडक्टिविटी में वृद्धि के लिए (LABOUR WELFARE WITH SOCIAL JUSTICE) (FOR PROMOTING PRODUCTIVITY WITH EMPLOYEES WELFARE)

शक्ति, समरथाय और सुख (PEACE, HARMONY AND SAFETY)

**License is hereby granted to**

Owner Details  
**Sh./M/s. Ashish Kumar Yadav**

Factory Details  
**M/s L.S. POWER CONTROL PVT. LTD.**  
**C-441-442, ANSAL PIONEER IND. PARK, BLASPUR, GURGAON**  
**Gurgaon, Gurgaon**

License Registration No. **GGN-ONLINE-GGN-L-18**  
License Serial No. **GGN-ONLINE-GGN-L-18**

valid for the premises described below for use as a factory is hereby renewed for the year **2019-2023** subject to the provisions of the Factories Act, 1948 and the rules made thereunder.  
This license shall remain in force till 31st day of December **2023**.

Year	Maximum No. of Workers	Maximum No. of Machines	Authorized Officer
2019-20	752	146	ASHISH KUMAR

**Sunit Khurana (PEPC-IL-PW)**  
For Chief Inspector of Factories, Haryana, Chandigarh

This is computer generated factory license to check & verify, please log on to [www.factories.in](http://www.factories.in) with factory license serial no. **GGN-ONLINE-GGN-L-18**

**DESCRIPTION OF THE LICENCED PREMISES**  
The licensed premises shown on Building Plan approved vide No. **FBP\_1354** Dated-**09-03-2018** are situated at the address given above and consist of building as per approved drawings.

**DIRECTORATE OF INDUSTRIAL SAFETY & HEALTH**  
LABOUR DEPARTMENT  
HARYANA, CHANDIGARH

**FORM F**

GOVERNMENT OF INDIA

No. 16-1197A/04

LICENCE OF "A" CLASS ELECTRICAL CONTRACTOR GRANTED UNDER RULE 45 OF THE INDIAN ELECTRICITY RULES, 1956

Shri/Smt./Ms. **ASHISH KUMAR YADAV**,  
Vill. - **Mansarovar**, Near Vilhas High School,  
Gurgaon.

are hereby licensed to carry out Electrical Installation work in the HARYANA subject to the conditions mentioned hereunder.

**RENEWAL DETAILS**

Date of renewal	Date of expiry	Details of Country, Licensing Board, Haryana.
04-06-2004	03-06-2005	MSL
21-7-2005	02-06-2006	MSL
07-04-2006	03-06-2007	MSL
07-06-2007	03-06-2008	MSL
09-06-2008	03-06-2009	MSL
11-12-2009	10-12-2010	MSL
10-12-2010	10-12-2011	MSL

**ANTRIKSH**  
SENDING TOMORROW

**ANTRIKSH DEVELOPERS & PROMOTERS PVT. LTD.**  
REAL ESTATE DEVELOPERS & PROMOTERS  
MCA 2, Sector 8, Gurgaon, New Delhi-122 002  
No. 1107-1108/1109/1110/1111/1112/1113/1114/1115/1116/1117/1118/1119/1120/1121/1122/1123/1124/1125/1126/1127/1128/1129/1130/1131/1132/1133/1134/1135/1136/1137/1138/1139/1140/1141/1142/1143/1144/1145/1146/1147/1148/1149/1150/1151/1152/1153/1154/1155/1156/1157/1158/1159/1160/1161/1162/1163/1164/1165/1166/1167/1168/1169/1170/1171/1172/1173/1174/1175/1176/1177/1178/1179/1180/1181/1182/1183/1184/1185/1186/1187/1188/1189/1190/1191/1192/1193/1194/1195/1196/1197/1198/1199/1200/1201/1202/1203/1204/1205/1206/1207/1208/1209/1210/1211/1212/1213/1214/1215/1216/1217/1218/1219/1220/1221/1222/1223/1224/1225/1226/1227/1228/1229/1230/1231/1232/1233/1234/1235/1236/1237/1238/1239/1240/1241/1242/1243/1244/1245/1246/1247/1248/1249/1250/1251/1252/1253/1254/1255/1256/1257/1258/1259/1260/1261/1262/1263/1264/1265/1266/1267/1268/1269/1270/1271/1272/1273/1274/1275/1276/1277/1278/1279/1280/1281/1282/1283/1284/1285/1286/1287/1288/1289/1290/1291/1292/1293/1294/1295/1296/1297/1298/1299/1300/1301/1302/1303/1304/1305/1306/1307/1308/1309/1310/1311/1312/1313/1314/1315/1316/1317/1318/1319/1320/1321/1322/1323/1324/1325/1326/1327/1328/1329/1330/1331/1332/1333/1334/1335/1336/1337/1338/1339/1340/1341/1342/1343/1344/1345/1346/1347/1348/1349/1350/1351/1352/1353/1354/1355/1356/1357/1358/1359/1360/1361/1362/1363/1364/1365/1366/1367/1368/1369/1370/1371/1372/1373/1374/1375/1376/1377/1378/1379/1380/1381/1382/1383/1384/1385/1386/1387/1388/1389/1390/1391/1392/1393/1394/1395/1396/1397/1398/1399/1400/1401/1402/1403/1404/1405/1406/1407/1408/1409/1410/1411/1412/1413/1414/1415/1416/1417/1418/1419/1420/1421/1422/1423/1424/1425/1426/1427/1428/1429/1430/1431/1432/1433/1434/1435/1436/1437/1438/1439/1440/1441/1442/1443/1444/1445/1446/1447/1448/1449/1450/1451/1452/1453/1454/1455/1456/1457/1458/1459/1460/1461/1462/1463/1464/1465/1466/1467/1468/1469/1470/1471/1472/1473/1474/1475/1476/1477/1478/1479/1480/1481/1482/1483/1484/1485/1486/1487/1488/1489/1490/1491/1492/1493/1494/1495/1496/1497/1498/1499/1500/1501/1502/1503/1504/1505/1506/1507/1508/1509/1510/1511/1512/1513/1514/1515/1516/1517/1518/1519/1520/1521/1522/1523/1524/1525/1526/1527/1528/1529/1530/1531/1532/1533/1534/1535/1536/1537/1538/1539/1540/1541/1542/1543/1544/1545/1546/1547/1548/1549/1550/1551/1552/1553/1554/1555/1556/1557/1558/1559/1560/1561/1562/1563/1564/1565/1566/1567/1568/1569/1570/1571/1572/1573/1574/1575/1576/1577/1578/1579/1580/1581/1582/1583/1584/1585/1586/1587/1588/1589/1590/1591/1592/1593/1594/1595/1596/1597/1598/1599/1600/1601/1602/1603/1604/1605/1606/1607/1608/1609/1610/1611/1612/1613/1614/1615/1616/1617/1618/1619/1620/1621/1622/1623/1624/1625/1626/1627/1628/1629/1630/1631/1632/1633/1634/1635/1636/1637/1638/1639/1640/1641/1642/1643/1644/1645/1646/1647/1648/1649/1650/1651/1652/1653/1654/1655/1656/1657/1658/1659/1660/1661/1662/1663/1664/1665/1666/1667/1668/1669/1670/1671/1672/1673/1674/1675/1676/1677/1678/1679/1680/1681/1682/1683/1684/1685/1686/1687/1688/1689/1690/1691/1692/1693/1694/1695/1696/1697/1698/1699/1700/1701/1702/1703/1704/1705/1706/1707/1708/1709/1710/1711/1712/1713/1714/1715/1716/1717/1718/1719/1720/1721/1722/1723/1724/1725/1726/1727/1728/1729/1730/1731/1732/1733/1734/1735/1736/1737/1738/1739/1740/1741/1742/1743/1744/1745/1746/1747/1748/1749/1750/1751/1752/1753/1754/1755/1756/1757/1758/1759/1760/1761/1762/1763/1764/1765/1766/1767/1768/1769/1770/1771/1772/1773/1774/1775/1776/1777/1778/1779/1780/1781/1782/1783/1784/1785/1786/1787/1788/1789/1790/1791/1792/1793/1794/1795/1796/1797/1798/1799/1800/1801/1802/1803/1804/1805/1806/1807/1808/1809/1810/1811/1812/1813/1814/1815/1816/1817/1818/1819/1820/1821/1822/1823/1824/1825/1826/1827/1828/1829/1830/1831/1832/1833/1834/1835/1836/1837/1838/1839/1840/1841/1842/1843/1844/1845/1846/1847/1848/1849/1850/1851/1852/1853/1854/1855/1856/1857/1858/1859/1860/1861/1862/1863/1864/1865/1866/1867/1868/1869/1870/1871/1872/1873/1874/1875/1876/1877/1878/1879/1880/1881/1882/1883/1884/1885/1886/1887/1888/1889/1890/1891/1892/1893/1894/1895/1896/1897/1898/1899/1900/1901/1902/1903/1904/1905/1906/1907/1908/1909/1910/1911/1912/1913/1914/1915/1916/1917/1918/1919/1920/1921/1922/1923/1924/1925/1926/1927/1928/1929/1930/1931/1932/1933/1934/1935/1936/1937/1938/1939/1940/1941/1942/1943/1944/1945/1946/1947/1948/1949/1950/1951/1952/1953/1954/1955/1956/1957/1958/1959/1960/1961/1962/1963/1964/1965/1966/1967/1968/1969/1970/1971/1972/1973/1974/1975/1976/1977/1978/1979/1980/1981/1982/1983/1984/1985/1986/1987/1988/1989/1990/1991/1992/1993/1994/1995/1996/1997/1998/1999/2000/2001/2002/2003/2004/2005/2006/2007/2008/2009/2010/2011/2012/2013/2014/2015/2016/2017/2018/2019/2020/2021/2022/2023/2024/2025/2026/2027/2028/2029/2030/2031/2032/2033/2034/2035/2036/2037/2038/2039/2040/2041/2042/2043/2044/2045/2046/2047/2048/2049/2050/2051/2052/2053/2054/2055/2056/2057/2058/2059/2060/2061/2062/2063/2064/2065/2066/2067/2068/2069/2070/2071/2072/2073/2074/2075/2076/2077/2078/2079/2080/2081/2082/2083/2084/2085/2086/2087/2088/2089/2090/2091/2092/2093/2094/2095/2096/2097/2098/2099/2100/2101/2102/2103/2104/2105/2106/2107/2108/2109/2110/2111/2112/2113/2114/2115/2116/2117/2118/2119/2120/2121/2122/2123/2124/2125/2126/2127/2128/2129/2130/2131/2132/2133/2134/2135/2136/2137/2138/2139/2140/2141/2142/2143/2144/2145/2146/2147/2148/2149/2150/2151/2152/2153/2154/2155/2156/2157/2158/2159/2160/2161/2162/2163/2164/2165/2166/2167/2168/2169/2170/2171/2172/2173/2174/2175/2176/2177/2178/2179/2180/2181/2182/2183/2184/2185/2186/2187/2188/2189/2190/2191/2192/2193/2194/2195/2196/2197/2198/2199/2200/2201/2202/2203/2204/2205/2206/2207/2208/2209/2210/2211/2212/2213/2214/2215/2216/2217/2218/2219/2220/2221/2222/2223/2224/2225/2226/2227/2228/2229/2230/2231/2232/2233/2234/2235/2236/2237/2238/2239/2240/2241/2242/2243/2244/2245/2246/2247/2248/2249/2250/2251/2252/2253/2254/2255/2256/2257/2258/2259/2260/2261/2262/2263/2264/2265/2266/2267/2268/2269/2270/2271/2272/2273/2274/2275/2276/2277/2278/2279/2280/2281/2282/2283/2284/2285/2286/2287/2288/2289/2290/2291/2292/2293/2294/2295/2296/2297/2298/2299/2300/2301/2302/2303/2304/2305/2306/2307/2308/2309/2310/2311/2312/2313/2314/2315/2316/2317/2318/2319/2320/2321/2322/2323/2324/2325/2326/2327/2328/2329/2330/2331/2332/2333/2334/2335/2336/2337/2338/2339/2340/2341/2342/2343/2344/2345/2346/2347/2348/2349/2350/2351/2352/2353/2354/2355/2356/2357/2358/2359/2360/2361/2362/2363/2364/2365/2366/2367/2368/2369/2370/2371/2372/2373/2374/2375/2376/2377/2378/2379/2380/2381/2382/2383/2384/2385/2386/2387/2388/2389/2390/2391/2392/2393/2394/2395/2396/2397/2398/2399/2400/2401/2402/2403/2404/2405/2406/2407/2408/2409/2410/2411/2412/2413/2414/2415/2416/2417/2418/2419/2420/2421/2422/2423/2424/2425/2426/2427/2428/2429/2430/2431/2432/2433/2434/2435/2436/2437/2438/2439/2440/2441/2442/2443/2444/2445/2446/2447/2448/2449/2450/2451/2452/2453/2454/2455/2456/2457/2458/2459/2460/2461/2462/2463/2464/2465/2466/2467/2468/2469/2470/2471/2472/2473/2474/2475/2476/2477/2478/2479/2480/2481/2482/2483/2484/2485/2486/2487/2488/2489/2490/2491/2492/2493/2494/2495/2496/2497/2498/2499/2500/2501/2502/2503/2504/2505/2506/2507/2508/2509/2510/2511/2512/2513/2514/2515/2516/2517/2518/2519/2520/2521/2522/2523/2524/2525/2526/2527/2528/2529/2530/2531/2532/2533/2534/2535/2536/2537/2538/2539/2540/2541/2542/2543/2544/2545/2546/2547/2548/2549/2550/2551/2552/2553/2554/2555/2556/2557/2558/2559/2560/2561/2562/2563/2564/2565/2566/2567/2568/2569/2570/2571/2572/2573/2574/2575/2576/2577/2578/2579/2580/2581/2582/2583/2584/2585/2586/2587/2588/2589/2590/2591/2592/2593/2594/2595/2596/2597/2598/2599/2600/2601/2602/2603/2604/2605/2606/2607/2608/2609/2610/2611/2612/2613/2614/2615/2616/2617/2618/2619/2620/2621/2622/2623/2624/2625/2626/2627/2628/2629/2630/2631/2632/2633/2634/2635/2636/2637/2638/2639/2640/2641/2642/2643/2644/2645/2646/2647/2648/2649/2650/2651/2652/2653/2654/2655/2656/2657/2658/2659/2660/2661/2662/2663/2664/2665/2666/2667/2668/2669/2670/2671/2672/2673/2674/2675/2676/2677/2678/2679/2680/2681/2682/2683/2684/2685/2686/2687/2688/2689/2690/2691/2692/2693/2694/2695/2696/2697/2698/2699/2700/2701/2702/2703/2704/2705/2706/2707/2708/2709/2710/2711/2712/2713/2714/2715/2716/2717/2718/2719/2720/2721/2722/2723/2724/2725/2726/2727/2728/2729/2730/2731/2732/2733/2734/2735/2736/2737/2738/2739/2740/2741/2742/2743/2744/2745/2746/2747/2748/2749/2750/2751/2752/2753/2754/2755/2756/2757/2758/2759/2760/2761/2762/2763/2764/2765/2766/2767/2768/2769/2770/2771/2772/2773/2774/2775/2776/2777/2778/2779/2780/2781/2782/2783/2784/2785/2786/2787/2788/2789/2790/2791/2792/2793/2794/2795/2796/2797/2798/2799/2800/2801/2802/2803/2804/2805/2806/2807/2808/2809/2810/2811/2812/2813/2814/2815/2816/2817/2818/2819/2820/2821/2822/2823/2824/2825/2826/2827/2828/2829/2830/2831/2832/2833/2834/2835/2836/2837/2838/2839/2840/2841/2842/2843/2844/2845/2846/2847/2848/2849/2850/2851/2852/2853/2854/2855/2856/2857/2858/2859/2860/2861/2862/2863/2864/2865/2866/2867/2868/2869/2870/2871/2872/2873/2874/2875/2876/2877/2878/2879/2880/2881/2882/2883/2884/2885/2886/2887/2888/2889/2890/2891/2892/2893/2894/2895/2896/2897/2898/2899/2900/2901/2902/2903/2904/2905/2906/2907/2908/2909/2910/2911/2912/2913/2914/2915/2916/2917/2918/2919/2920/2921/2922/2923/2924/2925/2926/2927/2928/2929/2930/2931/2932/2933/2934/2935/2936/2937/2938/2939/2940/2941/2942/2943/2944/2945/2946/2947/2948/2949/2950/2951/2952/2953/2954/2955/2956/2957/2958/2959/2960/2961/2962/2963/2964/2965/2966/2967/2968/2969/2970/2971/2972/2973/2974/2975/2976/2977/2978/2979/2980/2981/2982/2983/2984/2985/2986/2987/2988/2989/2990/2991/2992/2993/2994/2995/2996/2997/2998/2999/3000/3001/3002/3003/3004/3005/3006/3007/3008/3009/3010/3011/3012/3013/3014/3015/3016/3017/3018/3019/3020/3021/3022/3023/3024/3025/3026/3027/3028/3029/3030/3031/3032/3033/3034/3035/3036/3037/3038/3039/3040/3041/3042/3043/3044/3045/3046/3047/3048/3049/3050/3051/3052/3053/3054/3055/3056/3057/3058/3059/3060/3061/3062/3063/3064/3065/3066/3067/3068/3069/3070/3071/3072/3073/3074/3075/3076/3077/3078/3079/3080/3081/3082/3083/3084/3085/3086/3087/3088/3089/3090/3091/3092/3093/3094/3095/3096/3097/3098/3099/3100/3101/3102/3103/3104/3105/3106/3107/3108/3109/3110/3111/3112/3113/3114/3115/3116/3117/3118/3119/3120/3121/3122/3123/3124/3125/3126/3127/3128/3129/3130/3131/3132/3133/3134/3135/3136/3137/3138/3139/3140/3141/3142/3143/3144/3145/3146/3147/3148/3149/3150/3151/3152/3153/3154/3155/3156/3157/3158/3159/3160/3161/3162/3163/3164/3165/3166/3167/3168/3169/3170/3171/3172/3173/3174/3175/3176/3177/3178/3179/3180/3181/3182/3183/3184/3185/3186/3187/3188/3189/3190/3191/3192/3193/3194/3195/3196/3197/3198/3199/3200/3201/3202/3203/3204/3205/3206/3207/3208/3209/3210/3211/3212/3213/3214/3215/3216/3217/3218/3219/3220/3221/3222/3223/3224/3225/3226/3227/3228/3229/3230/3231/3232/3233/3234/3235/3236/3237/3238/3239/3240/3241/3242/3243/3244/3245/3246/3247/3248/3249/3250/3251/3252/3253/3254/3255/3256/3257/3258/3259/3260/326





# COMPANY PERFORMANCE CERTIFICATE



CONTINENTAL  
ENGINEERING CORP

Date: 29/09/2017

To  
M/S LS Power Control,  
G-349A, Sushant Lok, Phase II  
Sec 52  
Gurgaon  
Haryana

Sub: Project Completion Certificate

This is to certify that we have awarded Sub Contract (Sub Contract No :16150PH0019, Dated 4<sup>th</sup> Oct 2015 ) for Supply, Installation, Testing & Commissioning of Grid Power Supply For NC-03 to M/s LS Power Control. For the value of INR 62,95,488 (Sixty Two lakh Ninety Five Thousand Four Hundred and Eighty Eight only.

Main Contract Details are as below:

Employer: Delhi Metro Rail Corporation Limited (DMRC).

Main Contract : DMRC Contract NC-03: Part Design and construction of Elevated Via duct and 7 Elevated stations via, Knowledge Park II, Knowledge ParkI, Chowk, Alpha1, Alpha 2, Delta1, depot Station and connection to depot including Architectural Finishing works of station from chainage 19318m to 29567m of Noida- Greater Noida project.

We certify that the work has been completed satisfactorily and in stipulated time period of 8 weeks.

For Continental Engineering Corporation

(Daljinder Singh)  
General Manager- P&M



CONTINENTAL  
ENGINEERING CORP

Date: 29/09/2017

To  
M/S LS Power Control,  
G-349A, Sushant Lok, Phase II  
Sec 52  
Gurgaon  
Haryana

Sub: Project Completion Certificate

This is to certify that we have awarded Sub Contract (Sub Contract No :16150PH0009, Dated 20<sup>th</sup> Oct 2015 ) for Supply, Installation, Testing & Commissioning of Grid Power Supply For NC-01 to M/s LS Power Control. For the value of INR 53,29,884 (Fifty Three lakh Twenty Nine Thousand Eight Hundred and Eighty Four only.

Main Contract Details are as below:

Employer: Delhi Metro Rail Corporation Limited (DMRC).

Main Contract : DMRC Contract NC-01: Part Design and Construction of Elevated Via duct and 7 Elevated Stations via, Sector -71, Sector -5B, Sector -78, Sector -81, Dabri Road, Sector -83, Sector -137 including Architectural Finish works of Station from Chainage ( ) 458 m to 9030 m of Noida- Greater Noida Metro Project.

We certify that the work has been completed satisfactorily and in stipulated time period of 8 weeks.

For Continental Engineering Corporation

(Daljinder Singh)  
General Manager- P&M

NGF  
NARANG  
CONSTRUCTIONS & FINANCIERS PVT. LTD.

OFFICE  
404-01, N/A, Max, Sector-5,  
Noida, New Delhi- 201305  
Ph: 01260181274, 01261981  
Fax: 012-27801787  
e-mail: info@ngfconstruction.com  
www.ngfconstruction.com

Ref No: NGF/SPC/000

Ref. No: NGF/SPC/001

Date: \_\_\_\_\_

TO,

M/S LS Power Control  
349 A, G Block Sushant Lok Phase - 2  
Sector -52, GURGAON-122003 (Haryana)

Sub: Project Completion Certificate.

DEAR MR. ASHISH YADAV

We had given you the project for completing the external electrical work of our NARANG CONSTRUCTION & FINANCIER PVT. LTD.  
Project: Max Height Sonepat, Haryana for INR-7.35 crores

We certify that the work has been completed satisfactorily and in stipulated time period.

THANKING YOU

Yours sincerely

For NARANG CONSTRUCTION & FINANCIER PVT. LTD.

Max Heights

ACE GROUP  
Building Infrastructure

CHL LTD 61042000710-0400

Date: 18/07/2016

To  
M/S LS Power Control,  
G-349A, Sushant Lok, Phase II  
Sec 52, Gurgaon, Haryana

Sub: Project Completion Certificate

This is to certify that we have awarded WO (SRPL/WO/2015/32 Dated 18<sup>th</sup> Feb 2015) for supply and execution of electrical work at ACE PLATINUM, Greater Noida to M/s LS Power Control. For the value of INR 3,52,07,712 (Three Crore Fifty Two Lakh Seven thousand Seven (hundred and) Twelve only.

We certify that the work has been completed satisfactorily and in stipulated time period of 12 months.

Thanking you

(Ajay Choudhary)  
Ajay Choudhary  
(Ace Group)

Shreeji Builders Pvt. Ltd.  
Dist. Of: Phd No. 2/B, Sec-136, Noida  
Nept. Of: D-35, Anand Vihar, New Delhi-110029  
Dist. Of: 58-125, Sec-12, Greater Noida-201307, U.P.  
Ph: 0120-2600000/2600001

ACE  
platinum

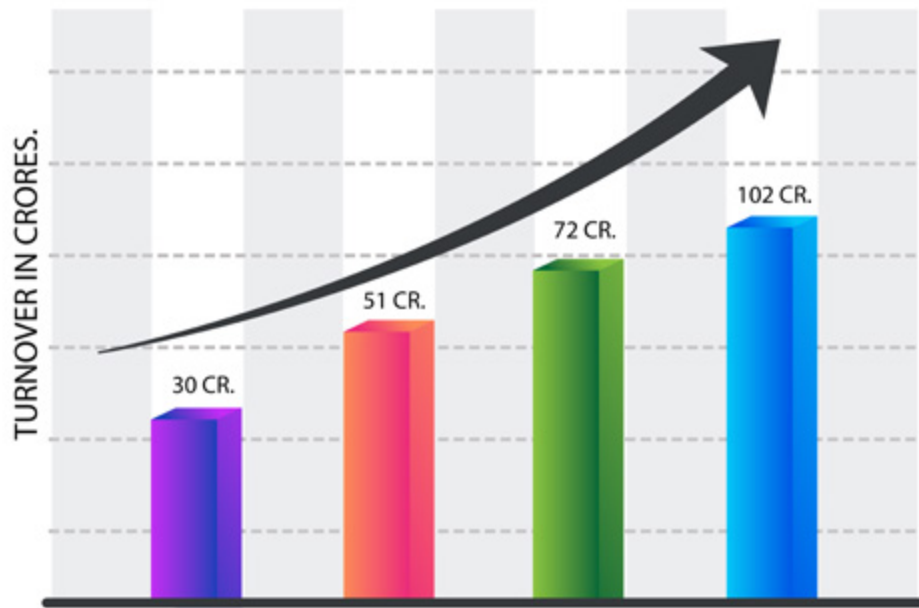


# CSR

Corporate  
Social  
Responsibility

## ADHERING TO CORPORATE SOCIAL RESPONSIBILITY

We at LS Power Control Pvt. Ltd. follow strict guidelines pertaining to corporate social responsibility. We aim to reduce carbon footprints to mitigate climate change followed by improving labor policies and embrace fair trade. We engage in charitable giving and volunteer efforts within the community. we believe in changing corporate policies to benefit the environment. Lastly, we participate in socially and environmentally conscious investments.

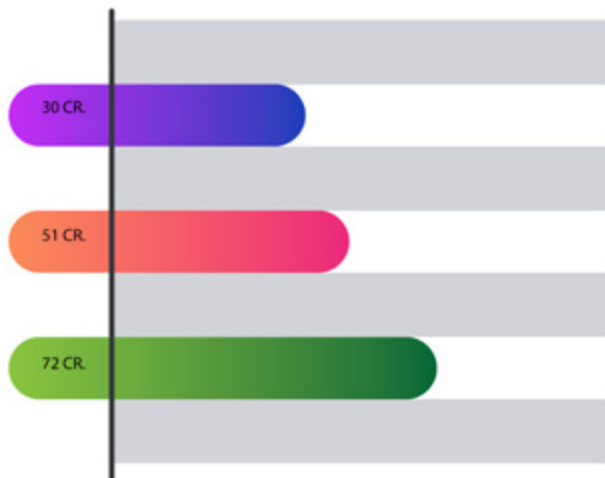


LS POWER CONTROL PVT. LTD. PROGRESS REPORT

## PROGRESS REPORT

Reaching phenomenal heights, L.S Power Control Private Limited has maintained a healthy sales cycle with constantly increasing production on yearly basis. The statistics clearly talk good numbers forming an upward trend.

The gradual increase in units have helped us grow and we strive to progress while maintaining a steady production cycle.



2016-17 2017-18 2018-19



**SCHNEIDER ELECTRIC  
LICENCE PARTNER**



**LARSEN & TOUBRO  
LICENCE PARTNER**



**AUTHORISED SERVICE CENTER  
FOR LVSWITCH GEAR PRODUCT**

### **CORPORATE OFFICE**

Plot number 775, Sector 52, Near Artemis  
Hospital, Wazirabad, Gurugram, HR, India

### **WORKS**

C-440-443, AnsalPioneer Park Industrial Area,  
Bilaspur, Gurugram, HR, India

### **PHONE**

+91-9810085244, 9810095244

### **EMAIL**

lspowercontrol@hotmail.com

### **WEBSITE**

www.lspowercontrol.com

**ISO 9001-2015, ISO 14001, ISO 18001-2007, CPRI**

+91-9810085248  
costinglspcpl@gmail.com



+91-9654278761  
service@lspowercontrol.com

**ENQUIRY**

**CUSTOMER CARE**