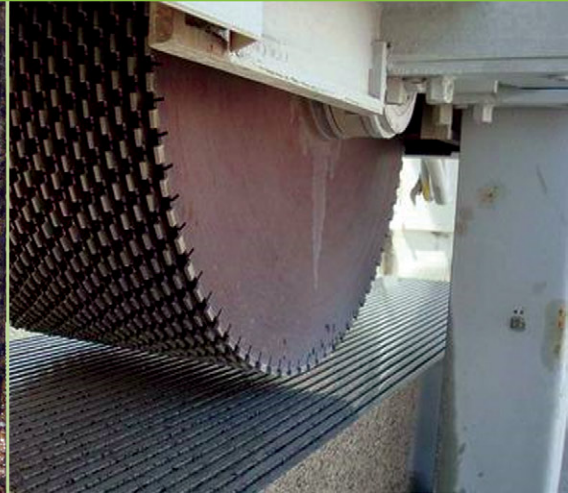


Sanchaya Impex

Diamond Cutting Tools Manufacturer



FROM PROCURING TO POLISHING



ABOUT US

An ISO 9001:2015 certified company, the brand Sanchaya Impex was established in the year 2010, as a subsidiary of Shrada Marble.

Having an experience of over 24 years in the industry, we started as a company manufacturing Diamond cutting tools, under the brand name of Shrada Marble in the year 1994.

The success of the company can be evaluated by the fact that the company commenced operations with a team of only 4 people in 1994, which has now reached over 45 people in our plant.

Eversince, we have sponsored major International Exhibitions and have been exhibiting widely in International Exhibitions. Our products are made as per customer requirements and 99% of them are successful.(In FY 2017-2018 only 1% rejection was faced in the total supply.)

OUR USP

- Dedicated team with more than 10 years of experience.
- Provision of immediate solutions, as per customer queries.
- Fast production of goods with proper final testing.
- Highly responsive sales and support staff.



OUR PRODUCTS

Sanchaya Impex keeps the quality of the products at the top most priority. We have gained an unmatched recognition for creating sustainable products. Products manufactured by us include:

- Diamond wires
- Core Drills
- Integral Drill Rods
- Multi cutter segments
- Gangsaw segments
- Polishing pads
- Concrete cutters
- Taper bits
- Electroplated beads



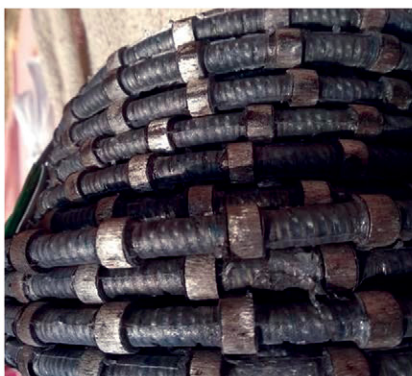
WIRE SAWS

A wire saw is a saw that uses a metal wire or cable for cutting. Wire saws are similar in principle to band saws or reciprocating saws, but they use abrasion to cut rather than saw teeth. Depending on the application, diamond material may or may not be used as an abrasive.

The Sanchaya Impex wires have one strand or many strands braided together (cable). A single-strand saw can be roughened to be abrasive, abrasive compounds can be bonded to the cable, or diamond-impregnated beads (and spacers) can be threaded on the cable. Our wire saws are often cooled and lubricated by water or oil.

We manufacture the following wire saws:

- QUARRY WIRE
- MONO WIRE
- CONCRETE WIRE
- MULTI WIRE



PRODUCTS	TYPE	SIZE	LENGTH	BEADS/ MTR.
QUARRY WIRE	ANY STONE	11.5 MM	50 MTR	40
MONO WIRE	ANY STONE	8.0/8.5/9.5/10.3/10.5/11 MM	ANY	36-40 (AS PER
CONCRETE WIRE	CONCRETE	11.5 - 12 MM	ANY	CUSTOMER)
MULTI WIRE	ANY STONE	6.3/6.5/7.5 MM	ANY	40

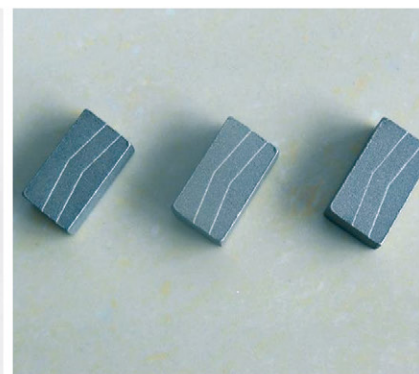
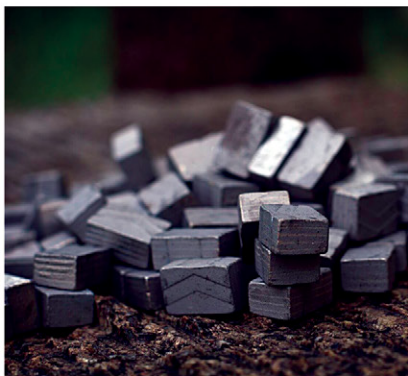
SEGMENTS & CUTTERS

A Segment is the most important part of any diamond tool, and the diamond segments provided by SANCHAYA IMPEX are used for cutting various materials such as for granite, marble, sandstone, limestone, and others.

Our diamond segments prove to be highly efficient, specially on granite & marble. On request, the company can recommend and produce, depending on customer requirements.

We manufacture the following segments and cutters:

- MULTI CUTTER SEGMENT
- GANGSAW SEGMENTS
- CONCRETE CUTTER



PRODUCTS	TYPE	SIZE	LENGTH	BEADS/ MTR.
MULTI CUTTER SEGMENT	GRANITE	5.5/6.5 MM	—	33/36/40
GANGSAW SEGMENTS	MARBLE & GRANITE	20*3.5/4*9 MM	—	—
CONCRETE CUTTER	CONCRETE	14 INCH AND 16 INCH	—	24-25 SEGMENTS

POLISHING PADS AND FRANKFURT

Backed with an excellent support of the team, we have emerged as one of the topmost manufacturers and suppliers of polishing pads and Frankfurts.

Our pads are available for clients, in a wide range of sizes and shapes to meet their individual requirements. Made of best abrasive technology, the pads are high in demand for use in various polishing and grinding machines.

Our range of products in this category includes:

- POLISHING PADS
- FRANKFURT



PRODUCTS	TYPE	SIZE	LENGTH	BEADS/ MTR.
POLISHING PADS	MARBLE & GRANITE	GRIT 50/100/200/400/600	100* 3 MM	———
POLISHING PADS	MARBLE & GRANITE	GRIT 800/1000/1 200/1 500/3000	100* 2.5 MM	———
FRANKFURT	———	24 TO 1,000	———	———

BITS & CORE DRILLS

Diamond core bits are used for drilling holes in hard and soft materials with or without steel reinforcing, such as cured and reinforced concrete, pre-stressed concrete, asphalt, brick, block, stone for air-conditioning, water pipe, gas nozzles, electric switches in walls and floors.

The core bits and drills of Sanchaya Impex are designed for fast drilling and maximum life.

We manufacture the following bits and core drills:

- TAPER BITS
- INTEGRAL DRILL STEEL
- TAPER DRILL RODS
- CORE DRILLS

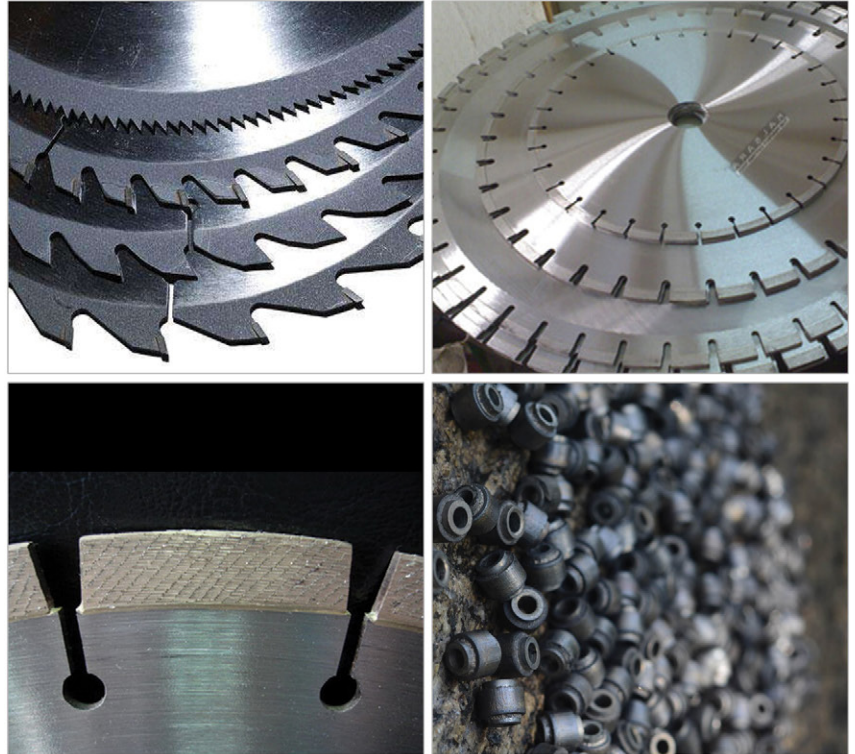


PRODUCTS	TYPE	SIZE	LENGTH	BEADS/ MTR.
TAPER BITS	ANY STONE	12 DEGREE , 34 MM, 8 BUTTON	—	PER BLADE
INTEGRAL DRILL STEEL	ANY STONE	2.5/5/8/10/15/21	—	—
TAPER DRILL RODS	ANY STONE	10/13/15/21	—	—
CORE DRILLS	MULTIPURPOSE	6.5/7.5/8.5/10/12/14/15/16/19/20/22/ /26/33 /37/40/42/45/50/57/62/75/90 /100/125/150 / SINK	—	—

BLADES & BEADS

SANCHAYA IMPEX are pioneers in production of diamond circular saw blades. Our blades provide the client with optimal performance and features. The quality of the diamond segments used is consistent. The diamond cutting discs offered by SANCHAYA IMPEX feature high cutting efficiency, long working life and smooth cutting without edge-broken. Diamond cutting saw blade with different specification from 105mm~3000 mm can be supplied according to requirements.

The Wire Saws beads manufactured by us are known for their performance and quality. These products are rigid in construction, dimensionally accurate, maintenance free and make the working process easier to carry out. In addition to manufacturing wires, we can also provide beads on client's request.



We manufacture the following segments and cutters:

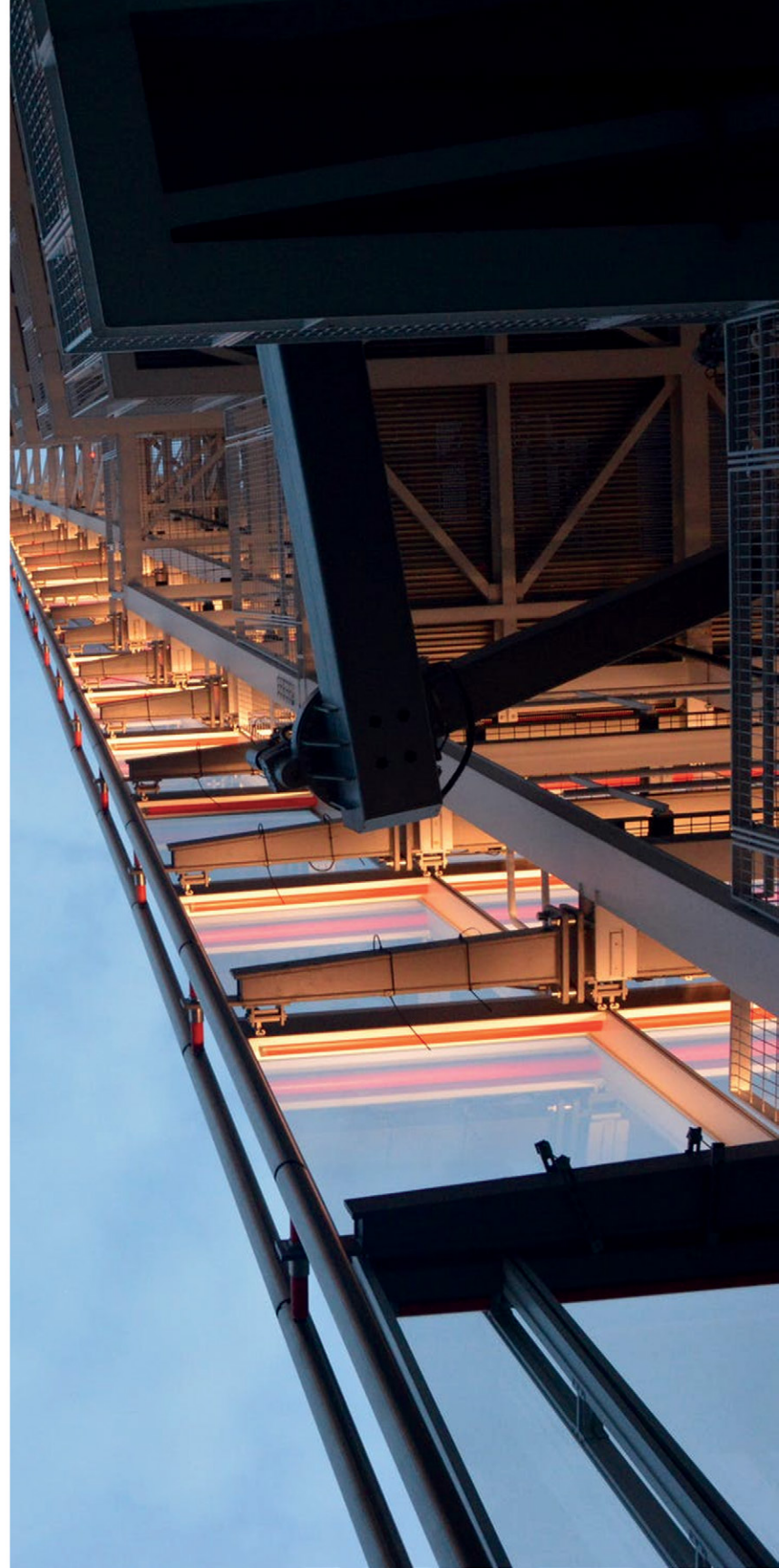
- SAW BLADES
- 0 CHIP BLADES
- TURBO RIM
- ELECTROPLATED BEADS

PRODUCTS	TYPE	SIZE	LENGTH	BEADS/ MTR.
SAW BLADES	MARBLE & GRANITE	110/125/150/180/200/250/300/350 MM	—	—
0 CHIP BLADES	ITALIAN & MARBLE TILES	110/200/250/300/350 MM	—	—
TURBO RIM	MARBLE & SANDSTONE	100 MM	—	—
ELECTROPLATED BEADS	MARBLE	11.5 MM	—	—

JOINT-VENTURED PRODUCTS

We at Sanchaya Impex, have joint ventured with our partner companies to deliver an additional range of products for our clients. Our quality team ensures that all our partners meet the required quality standards, defending the goodwill of the company. The range of joint ventured products includes:

- Electric Cables for mines
- Gangsaw blades
- Saw Blanks
- Springs and sleeves
- Locks (copper available)



NOTES



NOTES





Sanchaya Impex

HEAD OFFICE

SHREE PITRA KRIPA
VINAY MARG NEAR SMD CIRCLE, ALWAR
(RAJASTHAN)-301001-INDIA

MANUFACTURING UNIT

SHARDA MARBLES
G-1/471, MIA , ALWAR (RAJASTHAN)
301001-INDIA

BRANCH OFFICE

NO.202, 2ND FLOOR, PEARL BLISS SUJATA
SANGRAM COLONY, C SCHEME, JAIPUR
(RAJASTHAN)-301002-INDIA

+918239308000; +918890088000

info@sanchayaimpex.com;
diamondquery@gmail.com

WECHAT ID: MRINWIN

FACEBOOK PAGE: SANCHAYA IMPEX

INTERNATIONAL BRANCH OFFICE

AV. CAIÇARA, 125 BAIRRO CAIÇARA
CACHOEIRO DE ITAPEMIRIM - ES
BRAZIL

RICARDO LEITE: 0055 21 96190-9194
ricardoxleite@gmail.com

WWW.SANCHAYAIMPEX.COM

