

# **ALENIX POWER PROJECT**®

---

simplicity meets perfection

# ABOUT US

We work constantly in enhancing the **quality of our products** with the special care towards their **safety and durability**.

Alenix Power Project located in **non- polluting industrial area** Gurgaon, Bilaspur Haryana, India is among the **top Government approved** H.T. Electrical Contractors.

Our **strong dedication, zeal and hard work** in satisfying our clients with our service standards have made us among the **best electrical contractors** in our customers' list over the past many years.

We are known for supplying the **best quality electrical goods, services & installation** standards in every nook & corner of the nation through our highly **skilled & experienced** workforce.

## SAFE, EFFICIENT & EFFECTIVE PRODUCTS

We at Alenix take special care in selecting **raw materials** and then **manufacture, package and supply** every product of ours with intense care after undergoing the quality checks. Not only our products and services but our infrastructure is also very **well-equipped** and plays a key role in **manufacturing and supplying** excellent quality of products and service standards.

We work towards fulfillment of every desire of our client in the best possible manner and in order to achieve this, we provide complete support system.



# MANUFACTURING PLANT

We at Alenix Power Project design our products with **utmost care and dedication** keeping in mind their **quality, safety and timely delivery**.

In order to produce and manufacture the products, our plant is **equipped with** some of the **latest machinery** obtained from the **world-class brands** like **AMADA, HACO, YANGLI, MVL**, etc.

Our installations are highly **integrated and future ready** because of the fact that we enhance the quality of our products with the aid of some of the upgraded technological **machinery and testing equipment**. Such testing equipment are HV test equipment, HV Testing bench, primary injecting kit, secondary injecting kit unto **6000Amp, Insulation tester**, Digital powder coating thickness tester, Screw gauge **vernier caliper** and **Digital analogue**.



We cater to the demands of our customers regarding the taste & colour by providing extra surface finishing through our fully integrated powder coating process.



Turret Punch  
TPP Amada

## MACHINERY

Our Machineries include **Turret Punch TPP Amada, CNC Bending machine, CNC Sharing machine**.

**Turret Punch TPP Amada** machine is responsible in getting a punch in sheet as per design. **CNC Bending machine** is mainly used to bend the sheet in accordance with design or drawing. **CNC laser marking machine** uses CO2 Advance RECI sealed glass laser tube with the laser power of 90Watt. Essential tools are imported from top international brands like, Laser lens are imported American II IV, Laser mirror is from Singapore and high quality Slider is from Taiwan.

CNC CO2 LASER  
MACHINE



Yangli T30  
Turret Punching  
Machine



Amada RGM2 Bending  
Machine



# SWITCHBOARDS

## 11 KV VCB PANEL

11 KV VCB Panel is one of the many panels that we provide. These VCBs belong to **VK series** and are type tested in accordance with **international standard IEC -622271**. The panels can be placed directly on the floor as they are made in draw out type. The **VCB possess in-built anti pumping feature** and also provide the provision of manual and electrical spring charging. Its spring charging motor voltage is 230v AC and 110v DC/ 220v DC whereas; closing/ tripping coil voltage is 24v DC/ 110v DC/ 220v DC.



## 33 KV VCB PANEL

33 KV VCB Panel is another panel that we provide. These VCBs belong to **VY series** and are type tested in accordance with **international standard IEC- 622271**. The panels can be placed directly on the floor as they are made in draw out type. The VCB possess in-built anti pumping feature and also provide the provision of manual and electrical spring charging. Its spring charging motor voltage is **230v AC and 110v DC/ 220v DC** whereas; closing/ tripping coil voltage is 24v DC/ 110v DC/ 220v DC.

# SWITCHBOARDS

## MAIN LT PANEL (PCC)

Main LT Panel (PCC) is applied in distribution of power and also in control of **Main and D.G supply**. Its Rated Voltage is **415V Ac to 1000V Ac** and Rated Current is upto **6300 Amp**.

It has copper and aluminium bus bars and the **ambient temperature is 45 degree Celsius**.

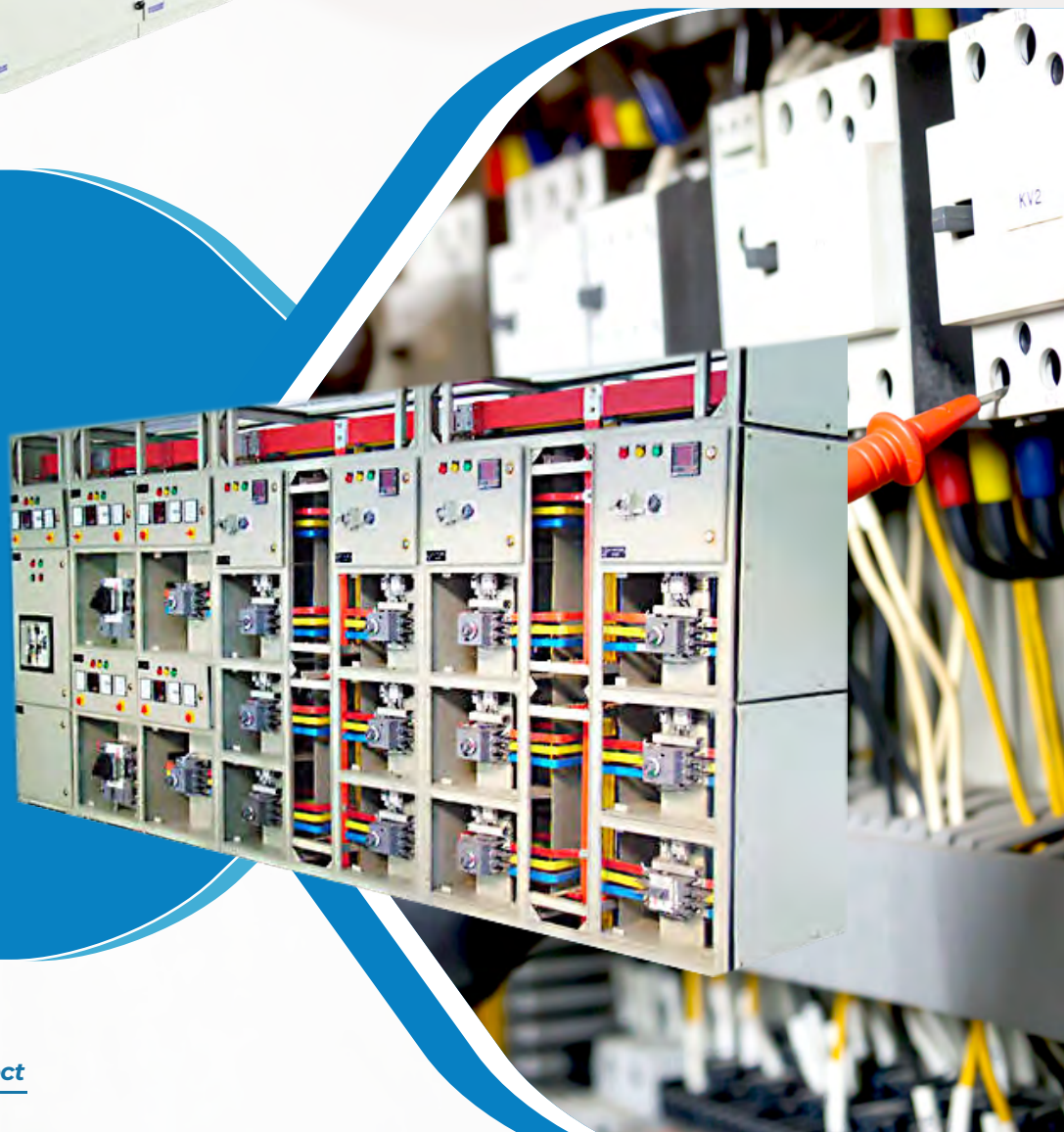
PCC is very well tested in terms of short circuit **current, temperature rise and degree of protection**.



## MAIN LT PANEL (MCC)

Main LT Panel (MCC) is a 3 phase panel having frequency of 50hz. Its Rated Voltage is **415V Ac to 1000V Ac** and Rated Current is upto **6300 Amp**. It has copper and aluminium bus bars and the ambient temperature is **45 degree Celsius**.

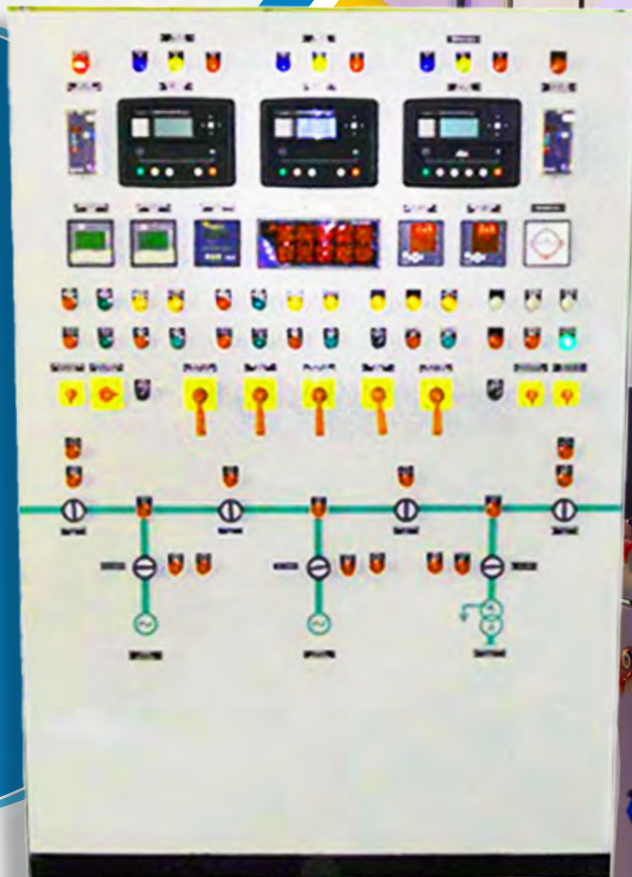
MCC is very **well tested** in terms of **short circuit current, temperature rise and degree of protection**.



# PANELS & ACS

## DG SYNCHRONISATION PANEL

DG Synchronisation Panel is a 3 phase panel having frequency of 50hz. Its Rated Voltage is 415V Ac to 1000V Ac and Rated Current is upto 6300 Amp. It has copper and aluminium bus bars and the ambient temperature is 45 degree Celsius. Its short time rating is upto 70 KA for 1 sec and the feeder configuration is fully draw out/ semi draw out/ fixed type. DG Synchronisation Panel is very well tested in terms of short circuit current, temperature rise and degree of protection.



## CAPACITOR PANEL

Capacitor Panel is a 3 phase panel having frequency of 50hz. Its Rated Voltage is 415V Ac to 1000V Ac and Rated Current is upto 6300 Amp. It has copper and aluminium bus bars and the ambient temperature is 45 degree Celsius.

## AUTOMATED CHARGING STATION (ACS)

Automated Charging Station (ACS) facilitates the public to recharge a mobile device. The station integrated with power distribution equipment automatically inserts and removes electric vehicle power interface and can be controlled through a smart phone.



# CABLE TRAY & COOLING COIL

## CABLE TRAYS

Cable trays are among the widely known products of Alenix Power Project. Manufactured by using latest and modern technology, these cable trays are useful in preventing any kind of short circuits thus, create safe environment to work in. Another feature of these cable trays is that they are extremely affordable without compromising with the quality. Therefore, these cable trays are in high demand in all the industrial and commercial structures. Our cables include Perforated cable tray, Unperforated cable tray, Mesh type cable tray and Ladder type cable tray. All these cable trays vary in sizes and sheet thickness and are accessorized with hold down clamp, wall clamp, earthing terminal, etc.

## COOLING COIL

Cooling coils are another notable product that we at Alenix Power Project manufacture. Made by using **latest and modern technology**, these cooling coils help power the **air handling equipment** in the market. In order to acquire a **comfortable indoor temperature** control, such air handling equipment can easily rely on these cooling coils. We provide these coils in number of diameters and different kinds of material that are capable of giving **high quality performance** at affordable rates. Since selecting the right coil is essential in any coil project, we provide you the cooling coils of both **copper and aluminum** that are of superb quality and yield best results.



# EXHAUST HOIST & RISING MAINS

## EXHAUST HOIST SYSTEM

Our Exhaust Hoist systems are manufactured with utmost care and dedication by our **skilled, trained and experienced** workers by keeping in mind the quality and value of your money. To run any operation, **effective and efficient** exhaust systems are extremely critical in resolving your air pollution problems. **Fans, hoods, ductwork and fume scrubbers** are carefully specified, fabricated and installed so that our customers can operate effectively. Available in **copper and aluminium metal**, the exhaust systems safely route exhaust gases into the environment from the engine. We have **designed our exhaust system** as per the industry standards to ensure profitable operation and to **provide safe environment** for our workers.

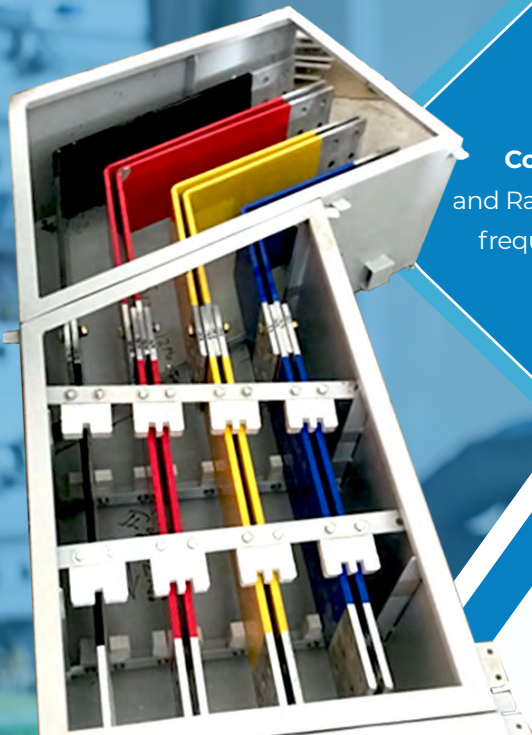


## RISING MAINS/ BUS DUCT

The Rising main and Bus duct consists of copper and aluminium bus bars for **phase and neural supply**. Being the pre-fabricated enclosure, it does integration along with installation. We offer the following two kinds of Rising main:

**Convention type:** It is air-insulated having Rating Voltage up to 415V and Rated Current ranging from **150AMP to 6300AMP**. It has the system frequency of 50Hz. The copper and aluminium conductor material has the design ambient temperature of **45 degree Celsius**.

**Sandwich type:** It is of **IEC 61439(1&6)** standard having operating voltage ranging from 415V to 1000Volt and insulation voltage of **1000Volt**. Bus bar material is made of copper and aluminium. The insulation class is 'F', Polyester+Mica.





# STREET POLES & LIGHTING & SUBSTATION

## STREET LIGHT POLES & LIGHTING

Street Light Poles are the significant feature of street lighting. They have emerged as an essential ingredient in many beautification projects of urban cities. We at Alenix Power Project offer variety of street light poles ranging from **5m to 20m poles** having different arm brackets in order to cater to the needs of locals and tourists. As a pole manufacturer, we provide street light poles of best quality that have yielded magical results so far. Street light poles are designed by **skilled, trained and experienced** workers in order to compliment the landscapes of the cities and to further provide a rich look to the busy streets of the cities. We provide different kinds of street light poles such as **decorative poles, conical poles and tubular poles**.

## SUBSTATION

Substation is another reliable product that we offer. Our substation is used for all voltage levels ranging from **11KV to 66KV**. We at Alenix Power Project offer **different types of substations** such as transmission substation, distribution substation, collector substation, convertor substation and mobile substation and compact substation. Our skilled and experienced staff has designed these substations by paying extra attention to **switching, protection and control equipment** with the aim of making them safe, reliable, durable and long lasting.



# CERTIFICATIONS

## ACCREDITATIONS RECEIVED BY US



वाणिज्य एवं उद्योग मंत्रालय  
**MINISTRY OF COMMERCE AND INDUSTRY**  
 सत्यमेव जयते

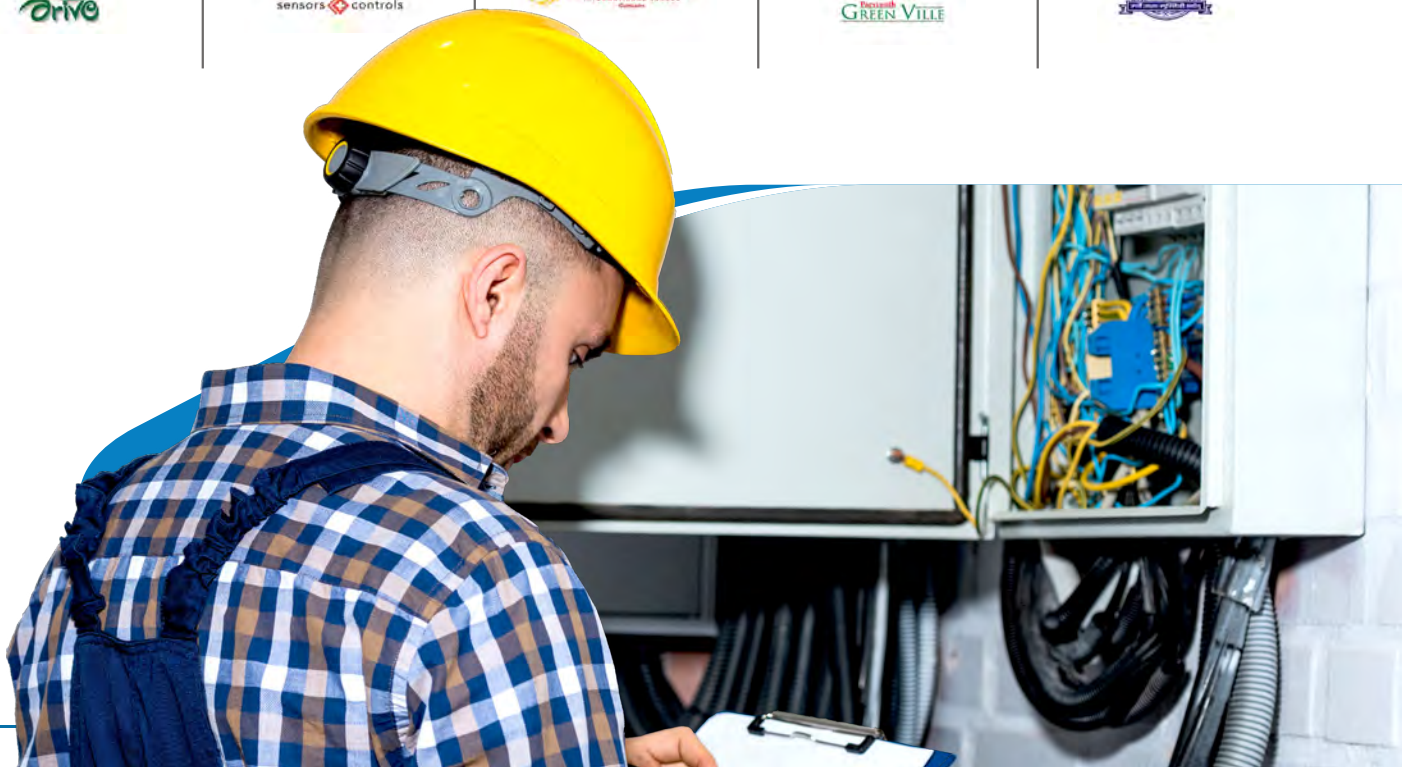
**MSME**  
 सूक्ष्म, लघु एवं मध्यम उद्यम  
**MICRO, SMALL & MEDIUM ENTERPRISES**



# OUR PRESTIGIOUS CLIENTS

*Lasting relations established with trust (Reputed & esteemed companies)*





## ALENIX POWER PROJECT

### HEAD OFFICE

DLF Phase – III, Gurgaon- 122010

### UNIT

C-624, 625, Ansal Pioneer Industrial Park, Bilaspur,  
Gurgaon - 122413

### PHONE

0124-2977030

### EMAIL

mail@alenix.in

### MOBILE

+91-9650740740,  
+91-9990740740

### WEBSITE

www.alenix.in;  
www.alenix.co

## Govt. Approved 'A' Class HT Electrical Contractor

